



Bold AND DARING decisions: HOW TO LET EVERYONE IN ON SUBSURFACE OBSCURITIES



GeoConnect^{3d} is funded under the GeoEnergy theme of GeoERA. This project has received funding from the European Union's Horizon 2020 research and innovation programme under grant agreement No 731166.



MOUNTAINS of AMBITION

- Absorb data and results
- Give them context
- Relate them
- Cross theme boundaries
(be generic)
- Cross communication barriers



How do you like your STEAK?

- Understanding pan EU scale
- Serving local parameters:
 - Raw seismic data (seismic geomanifestations)
 - Geological information
 - Fluid related geomanifestations



Which rocks SERVE WATER?

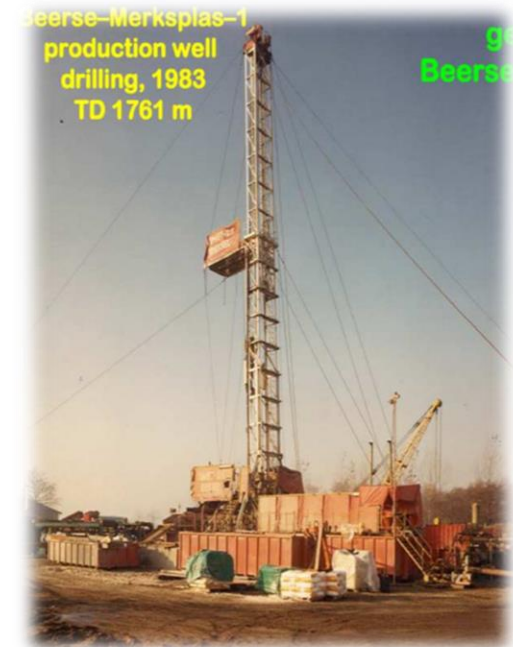
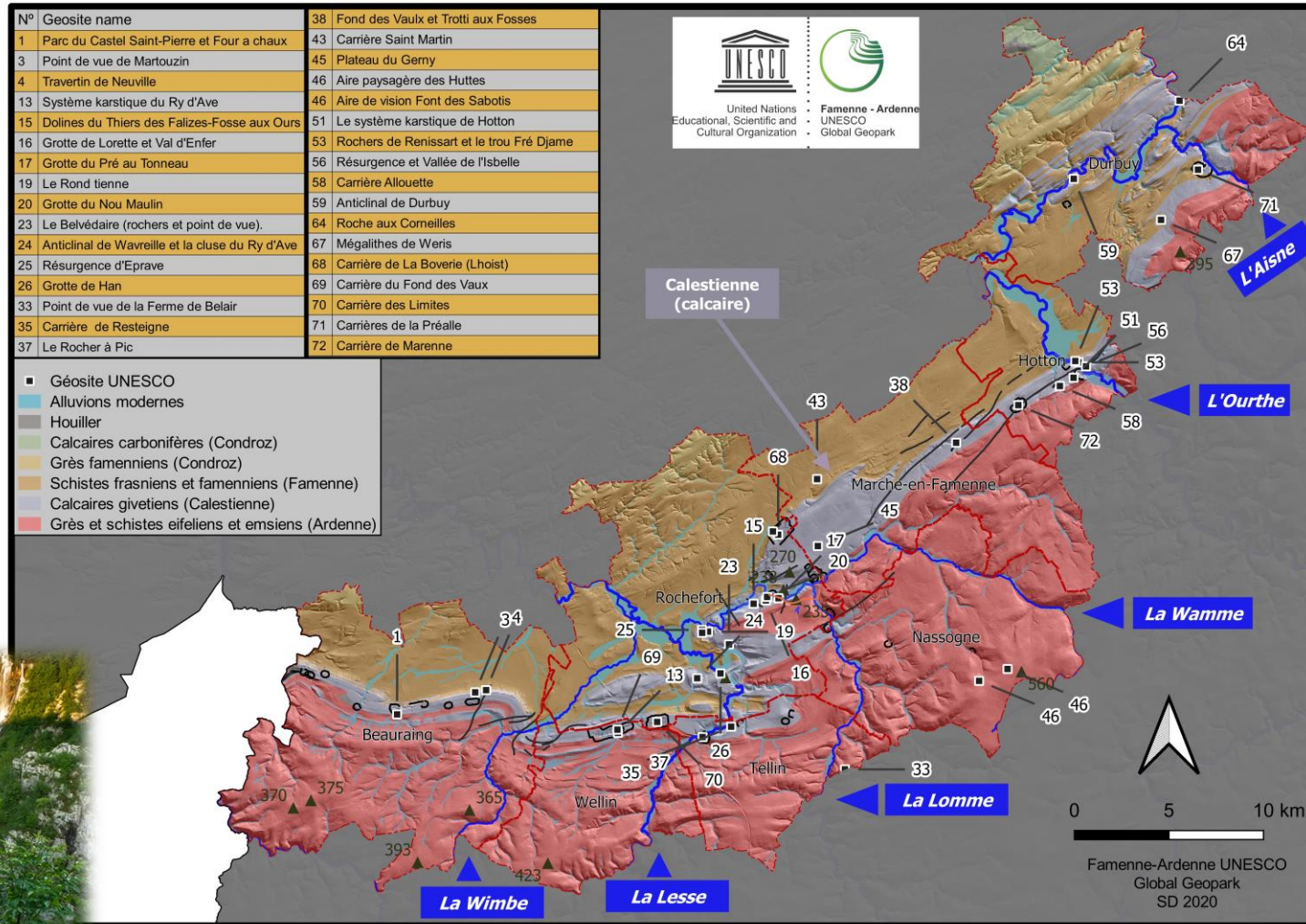
Siliciclastic rocks



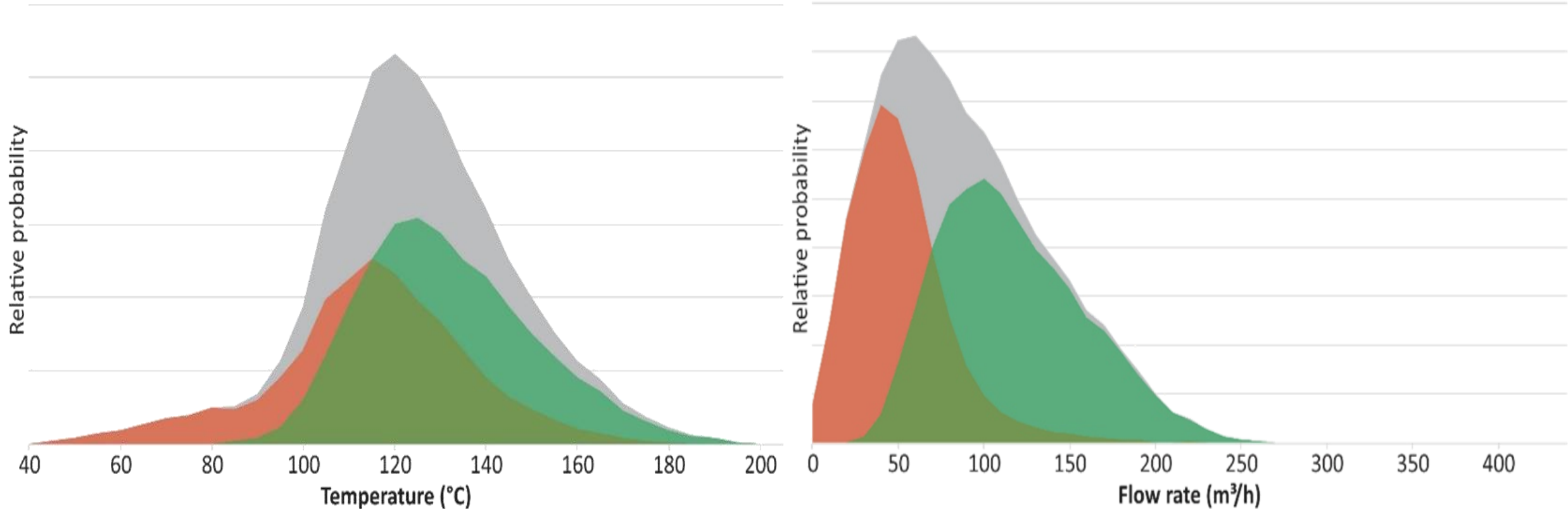
Carbonates



RESERVOIRS FOR COLD AND WARM WATER



GEOHERMAL (CARBONATE) CHALLENGE

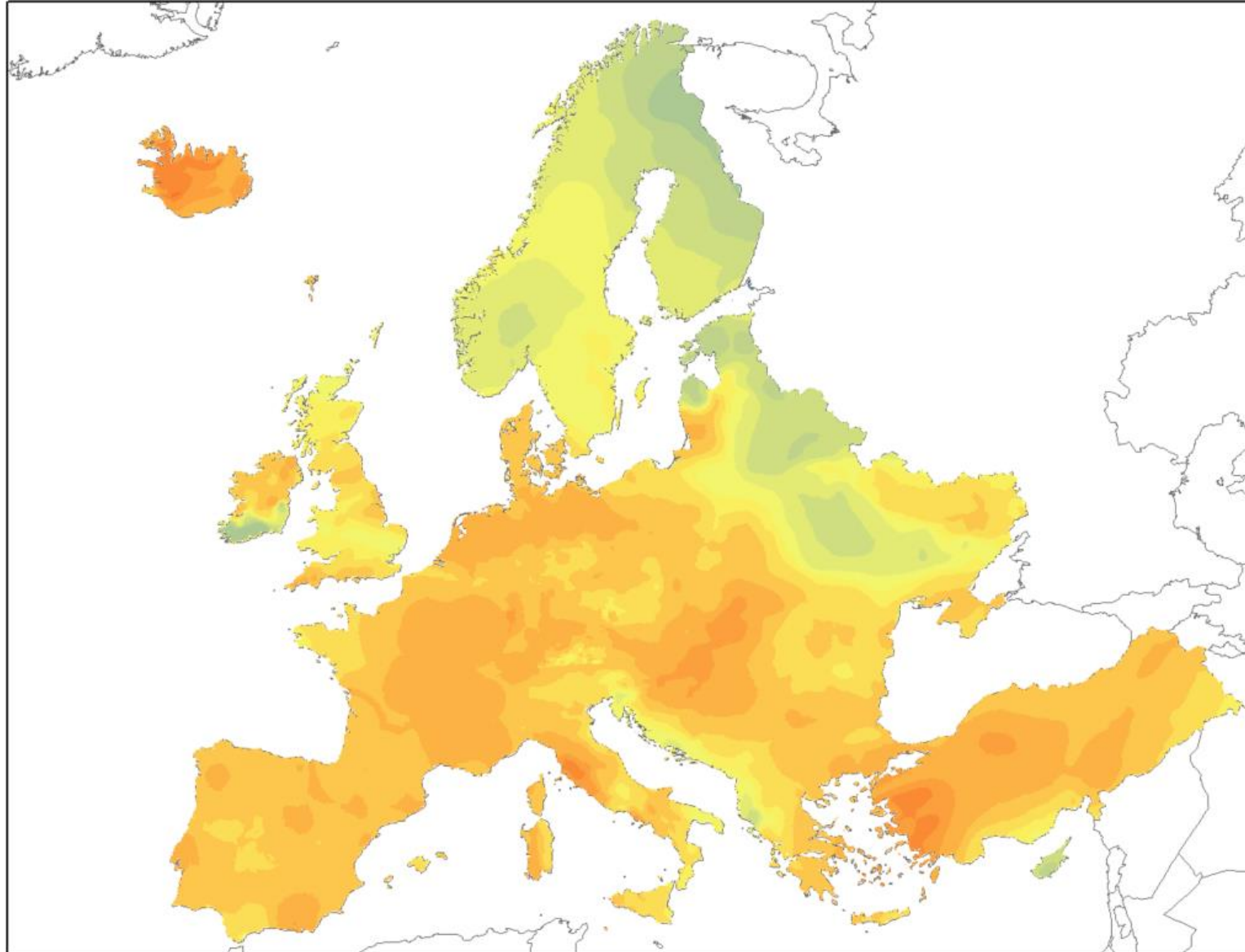


Temperature equates depth
and is
quite predictable

Flow rate is crucial
and
poorly predictable



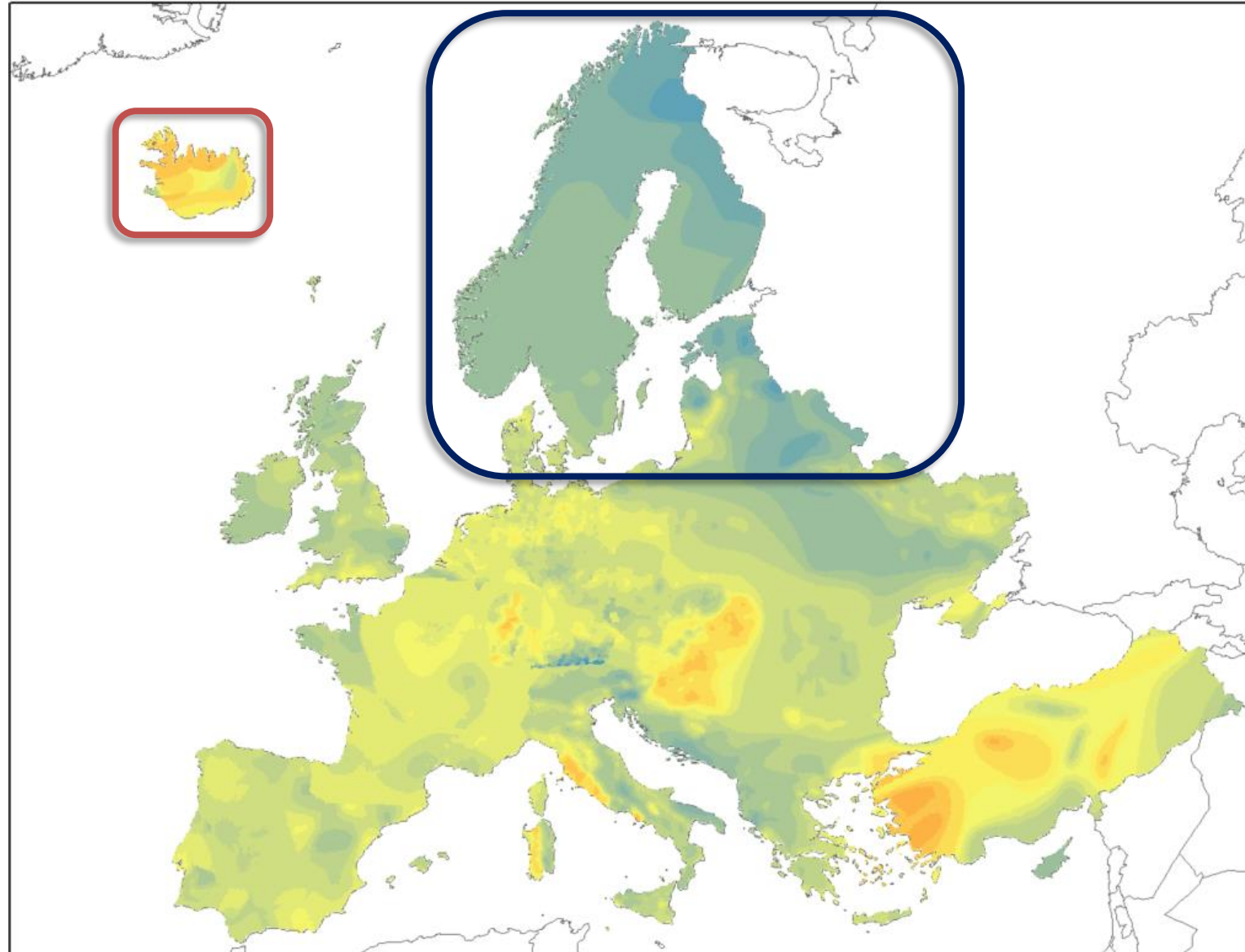
GEOHERMAL POTENTIAL (TEMPERATURE)



T 5000m

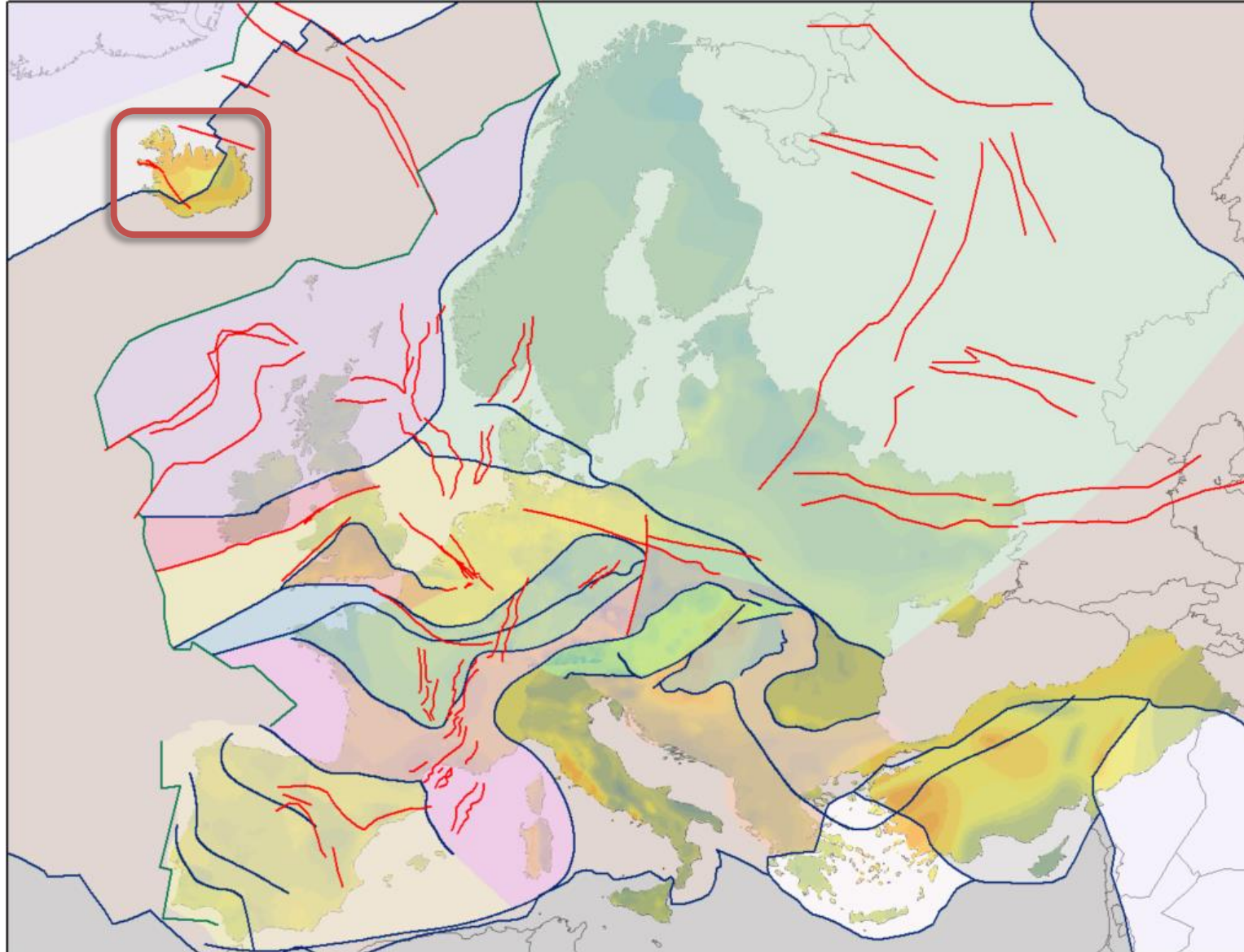
Thanks to
hans.veldkamp@tno.nl

FRAMING THE GEOTHERMAL POTENTIAL

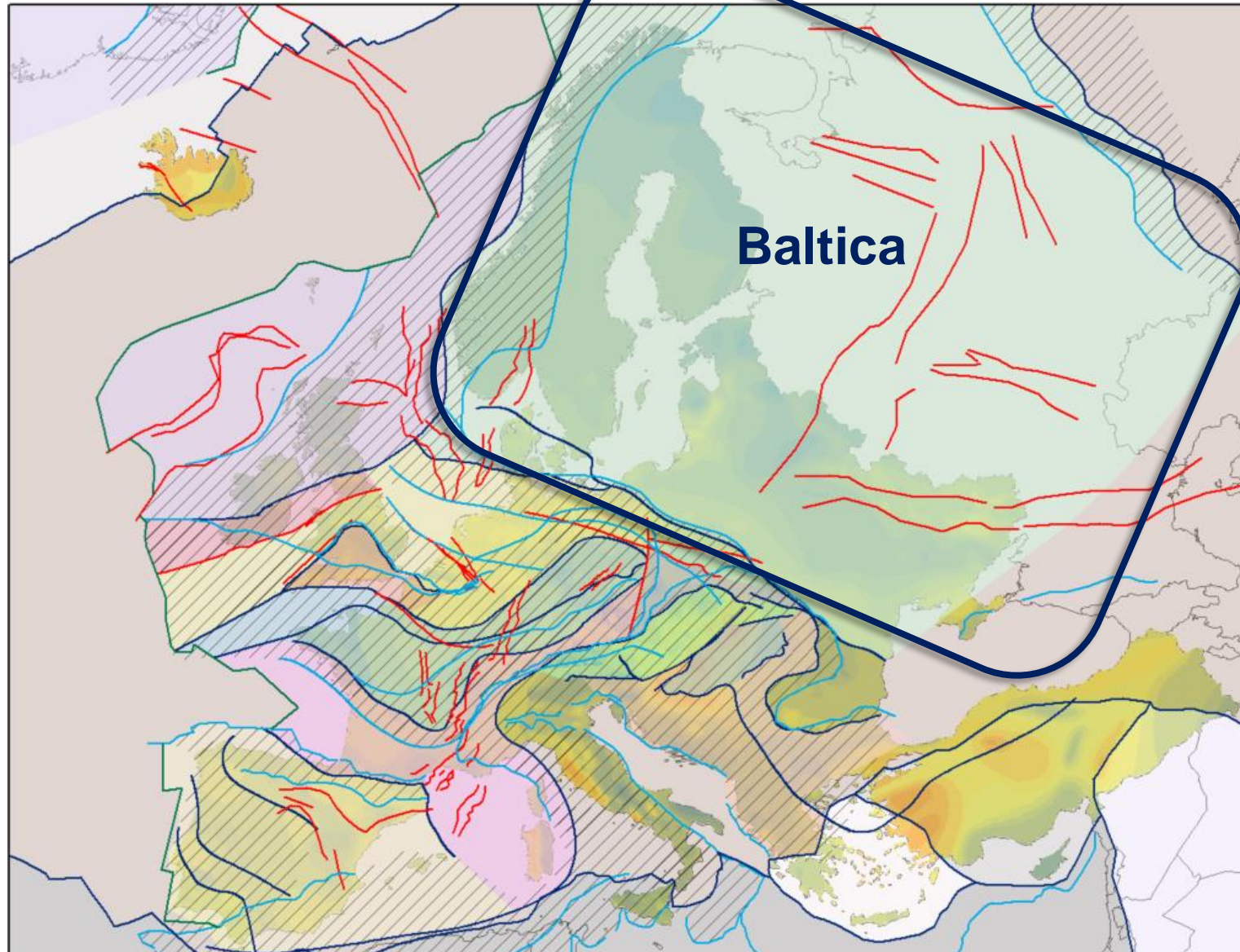


T 2000m

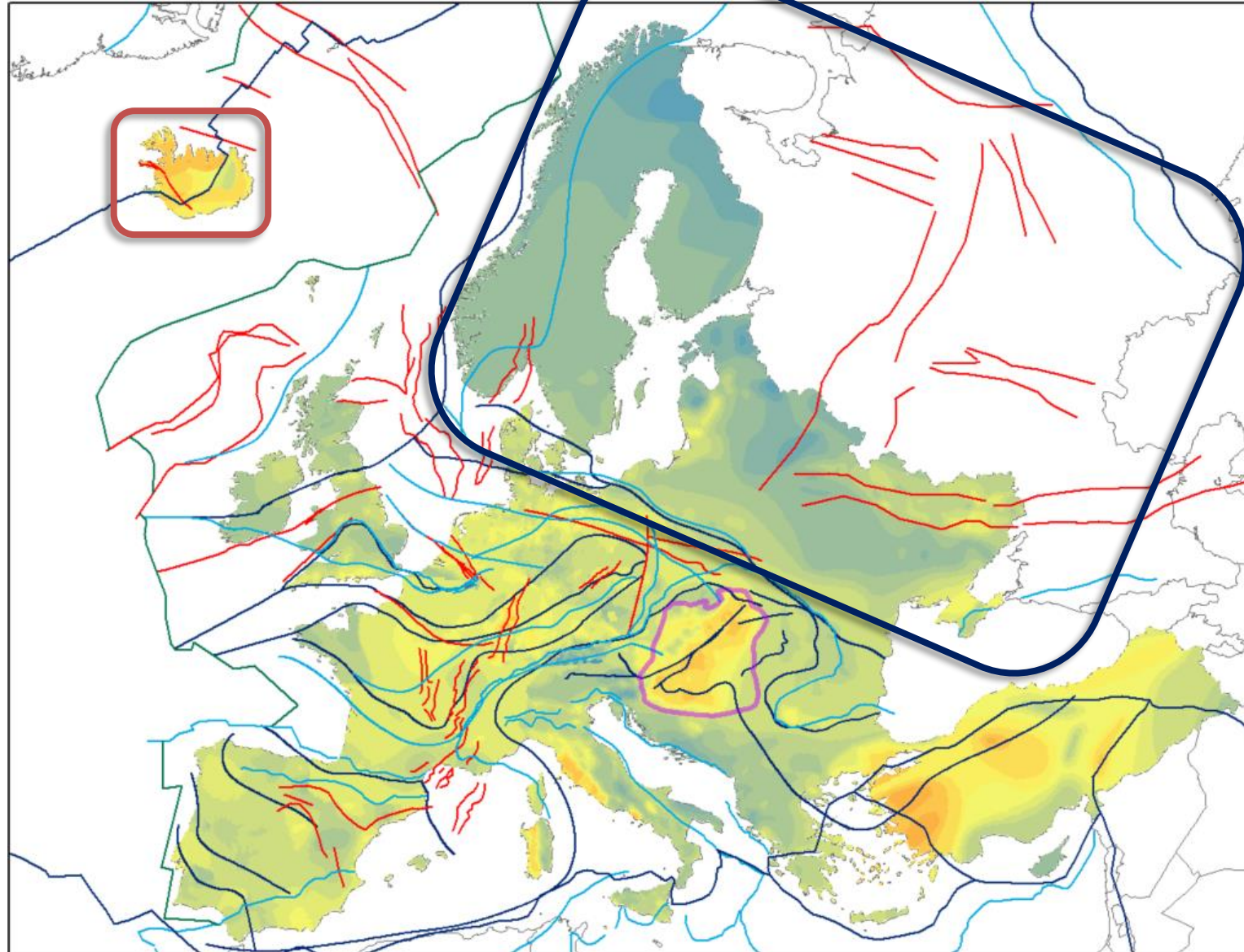
FRAMING THE GEOTHERMAL POTENTIAL



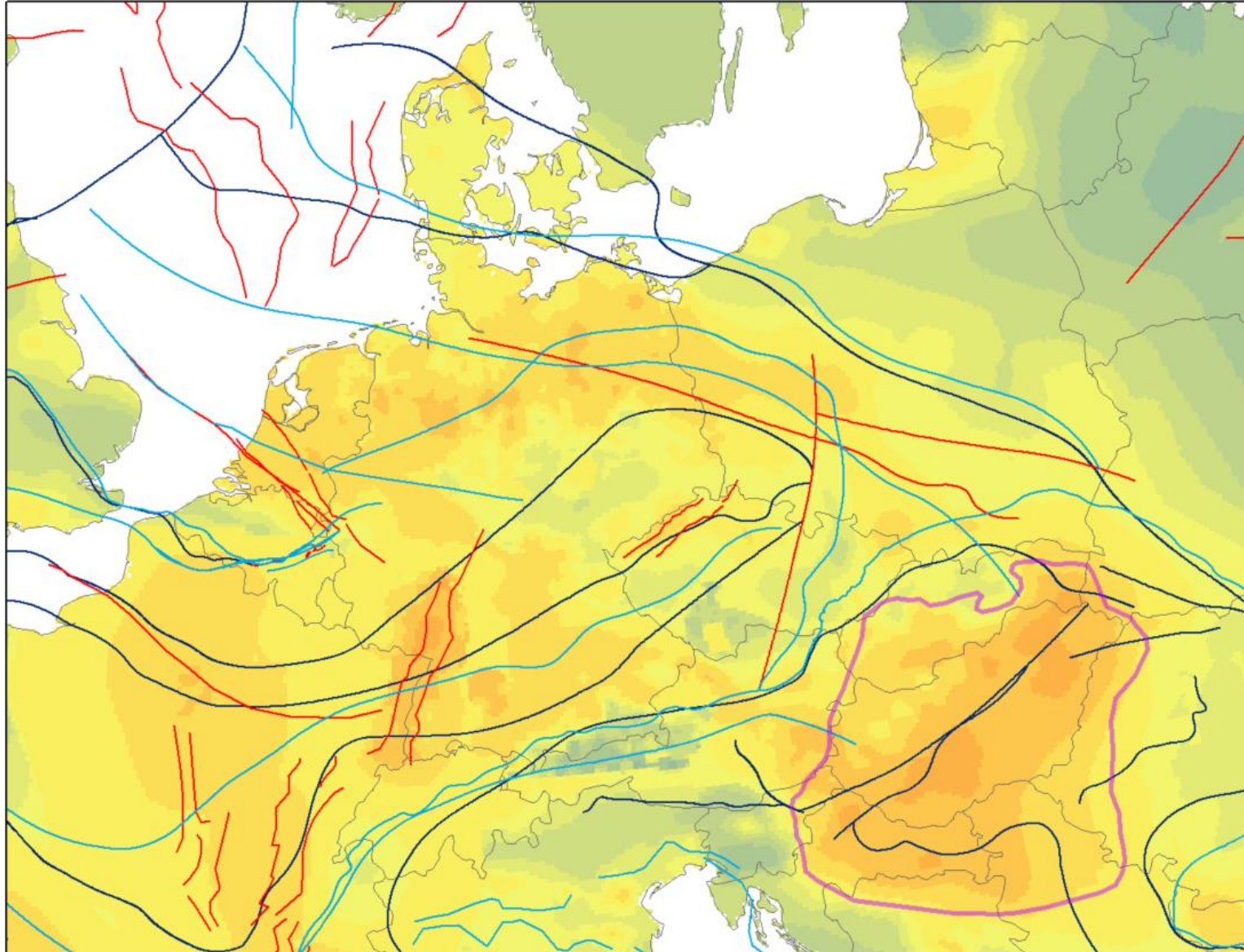
FRAMING THE GEOTHERMAL POTENTIAL



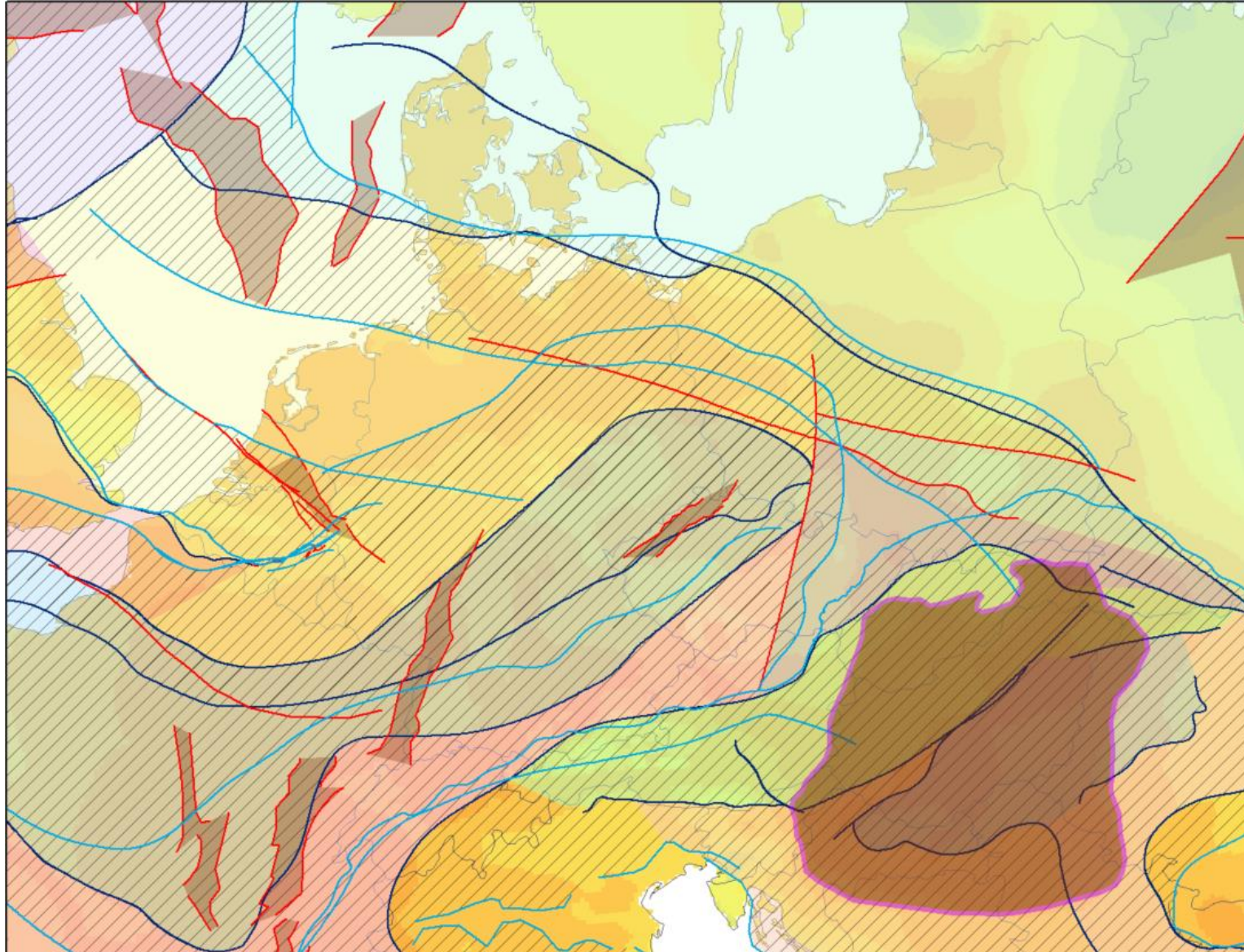
FRAMING THE GEOTHERMAL POTENTIAL



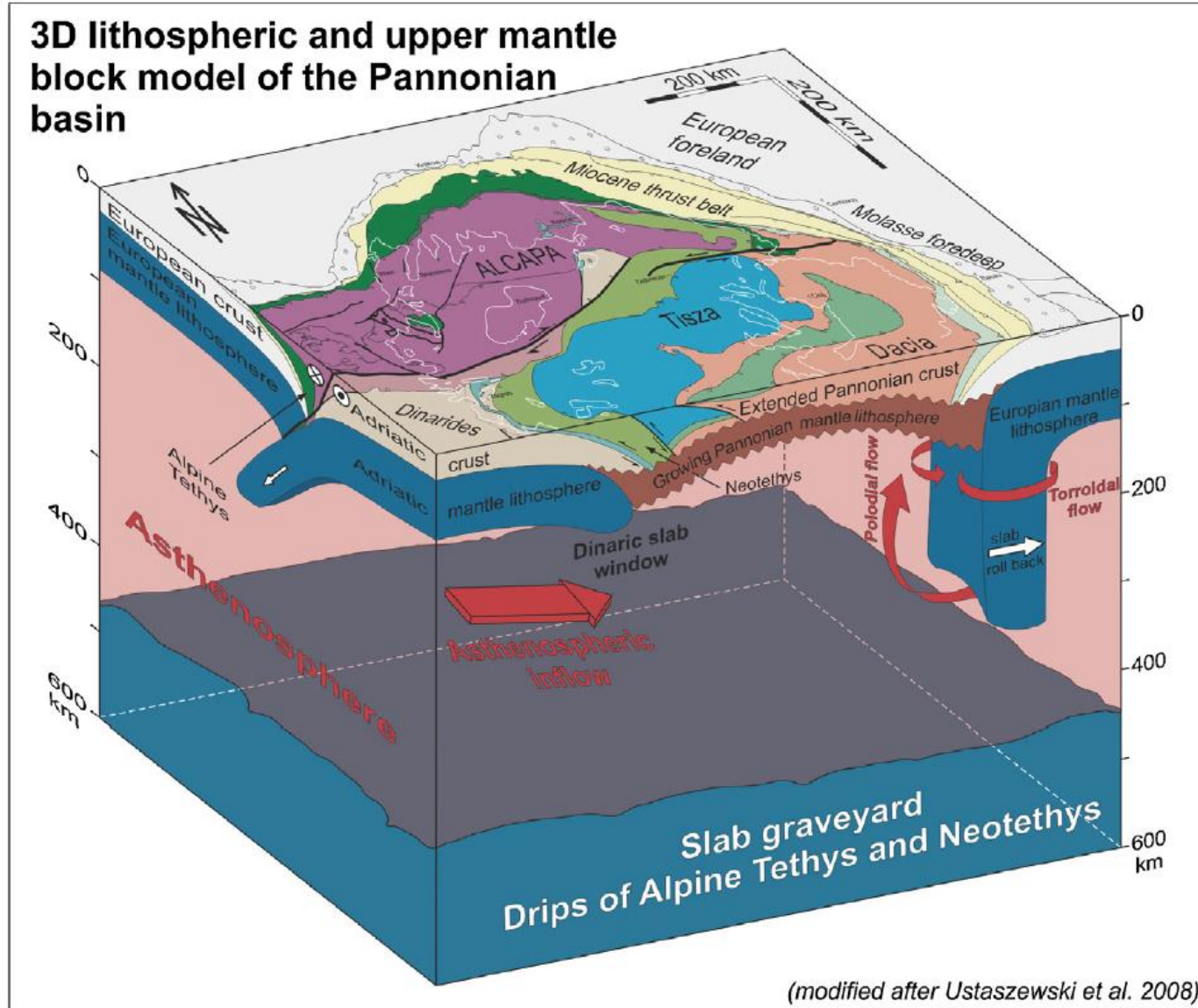
FRAMING THE GEOTHERMAL POTENTIAL



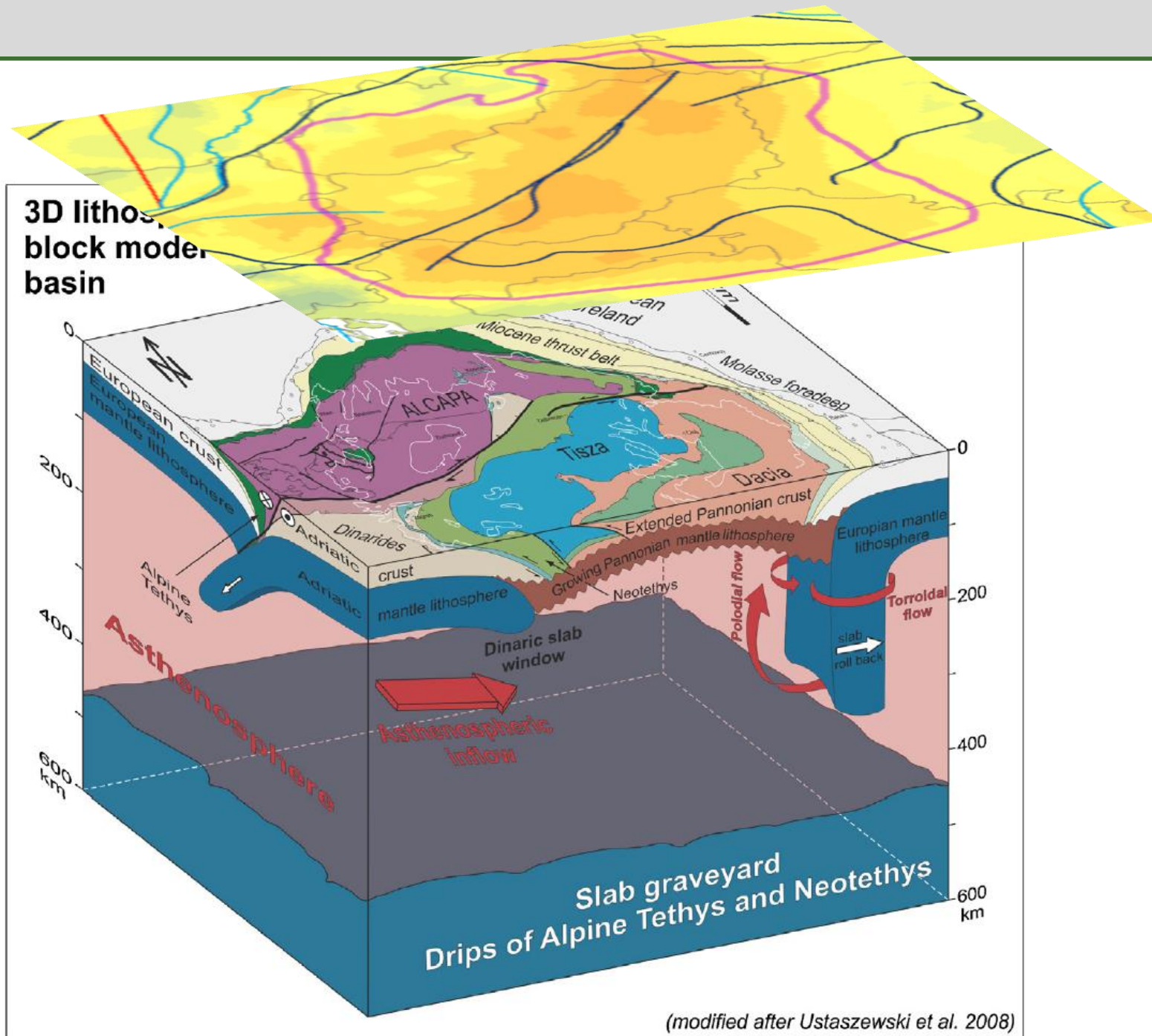
FRAMING THE GEOTHERMAL POTENTIAL



FRAMING THE GEOTHERMAL POTENTIAL



Hovarth et al. (2015), Evolution of the Pannonian basin and its geothermal resources

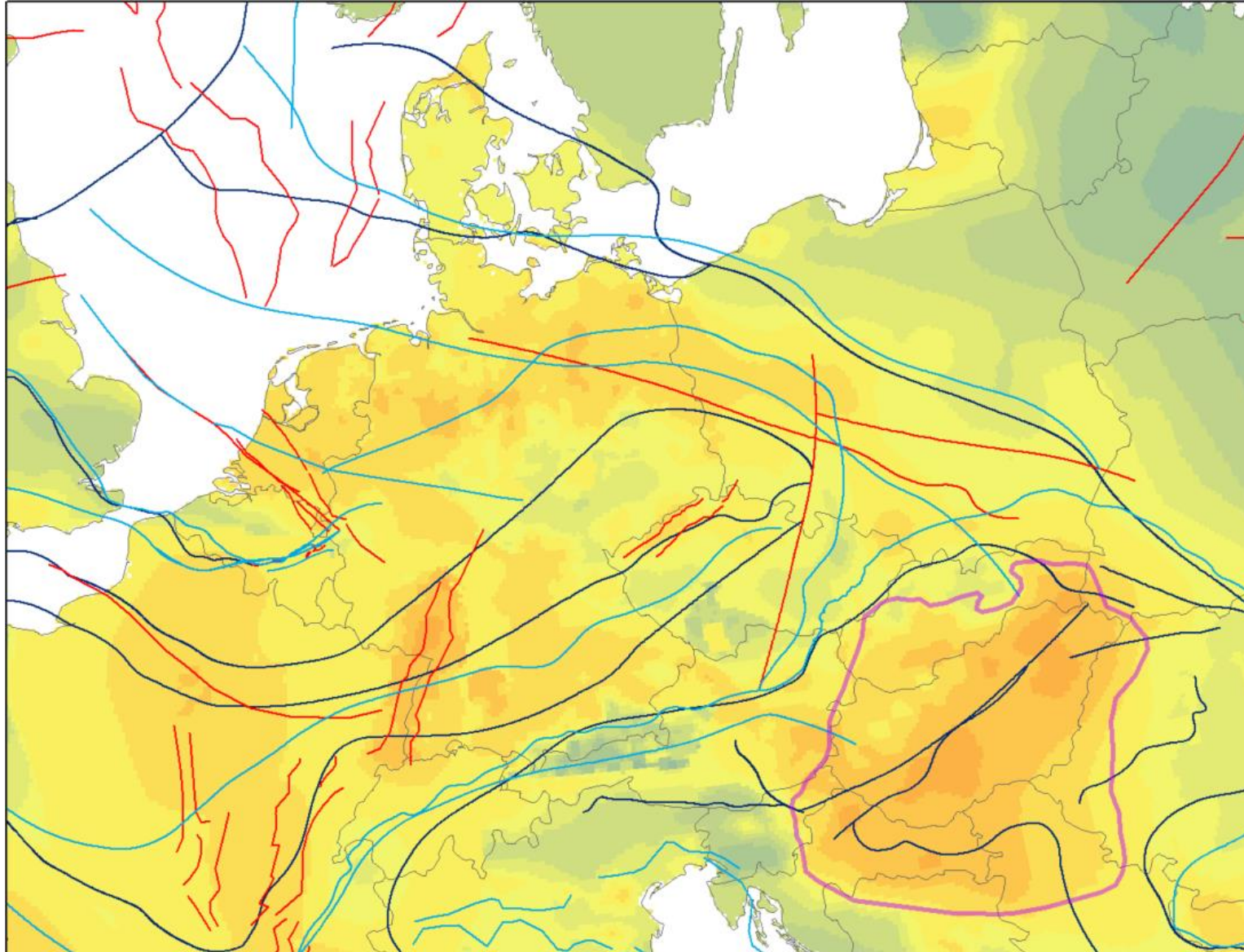


Hovarth et al. (2015), Evolution of the Pannonian basin and its geothermal resources

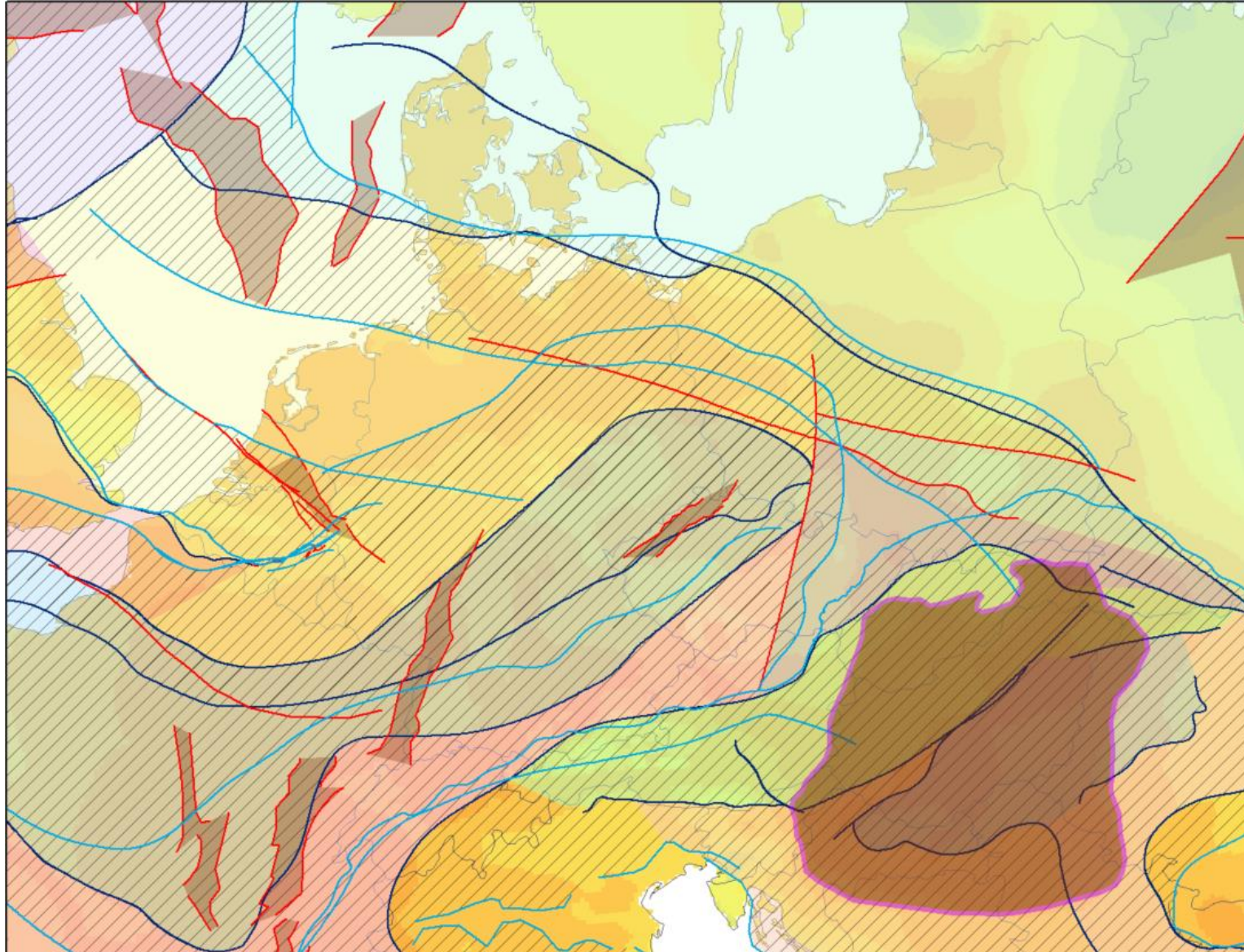
(modified after Ustaszewski et al. 2008)



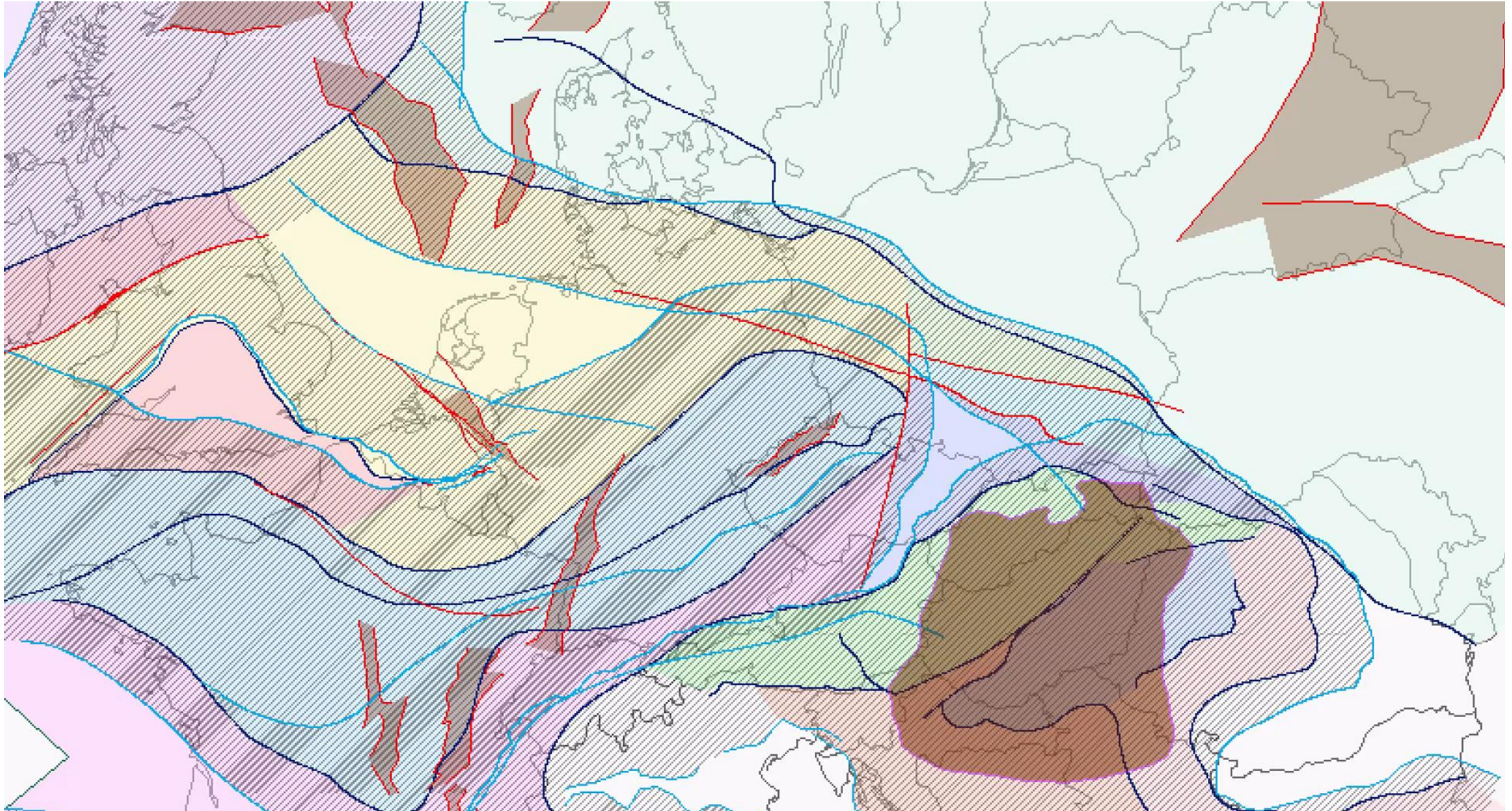
FRAMING THE GEOTHERMAL POTENTIAL



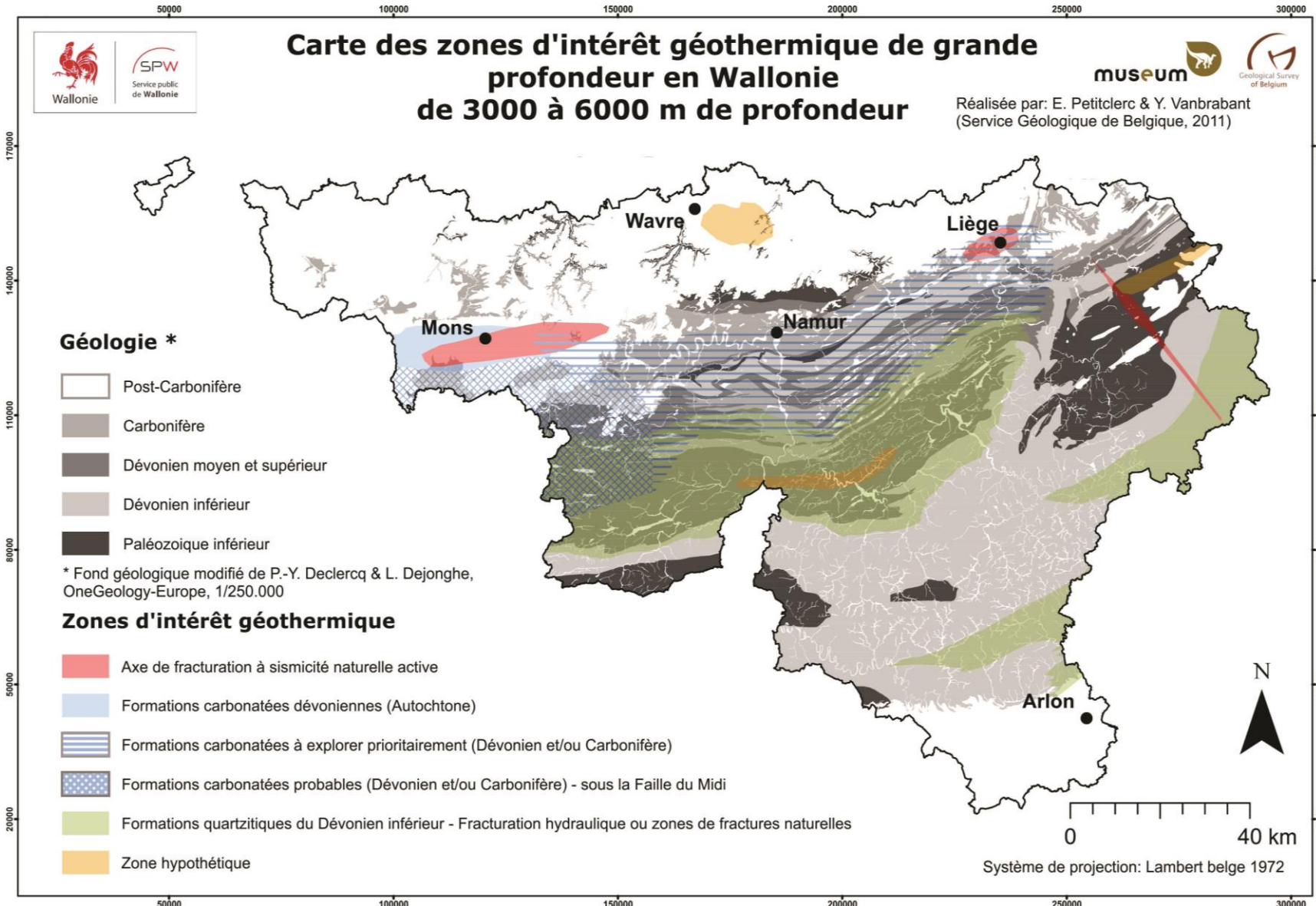
FRAMING THE GEOTHERMAL POTENTIAL



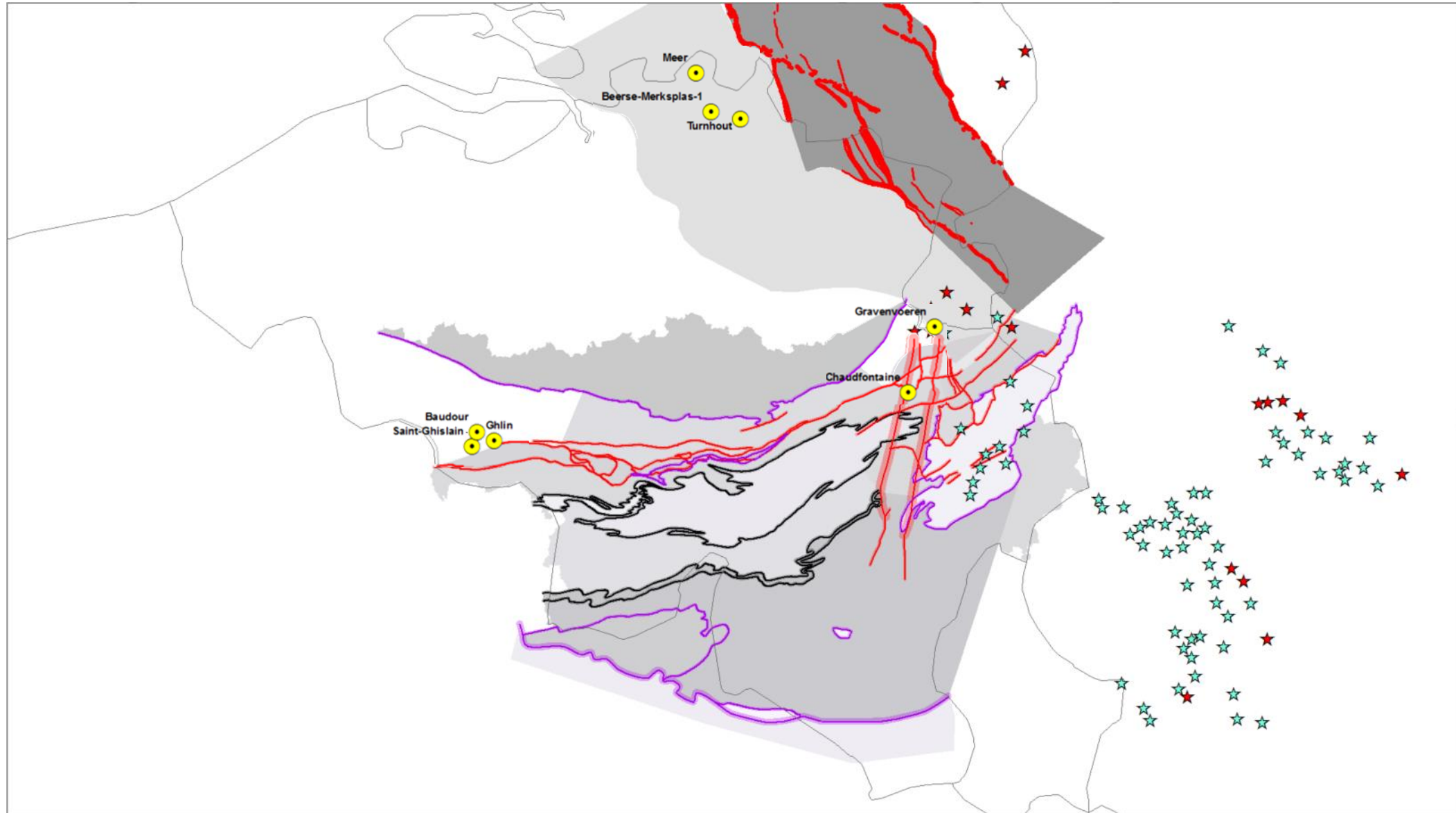
FRAMING THE GEOTHERMAL POTENTIAL



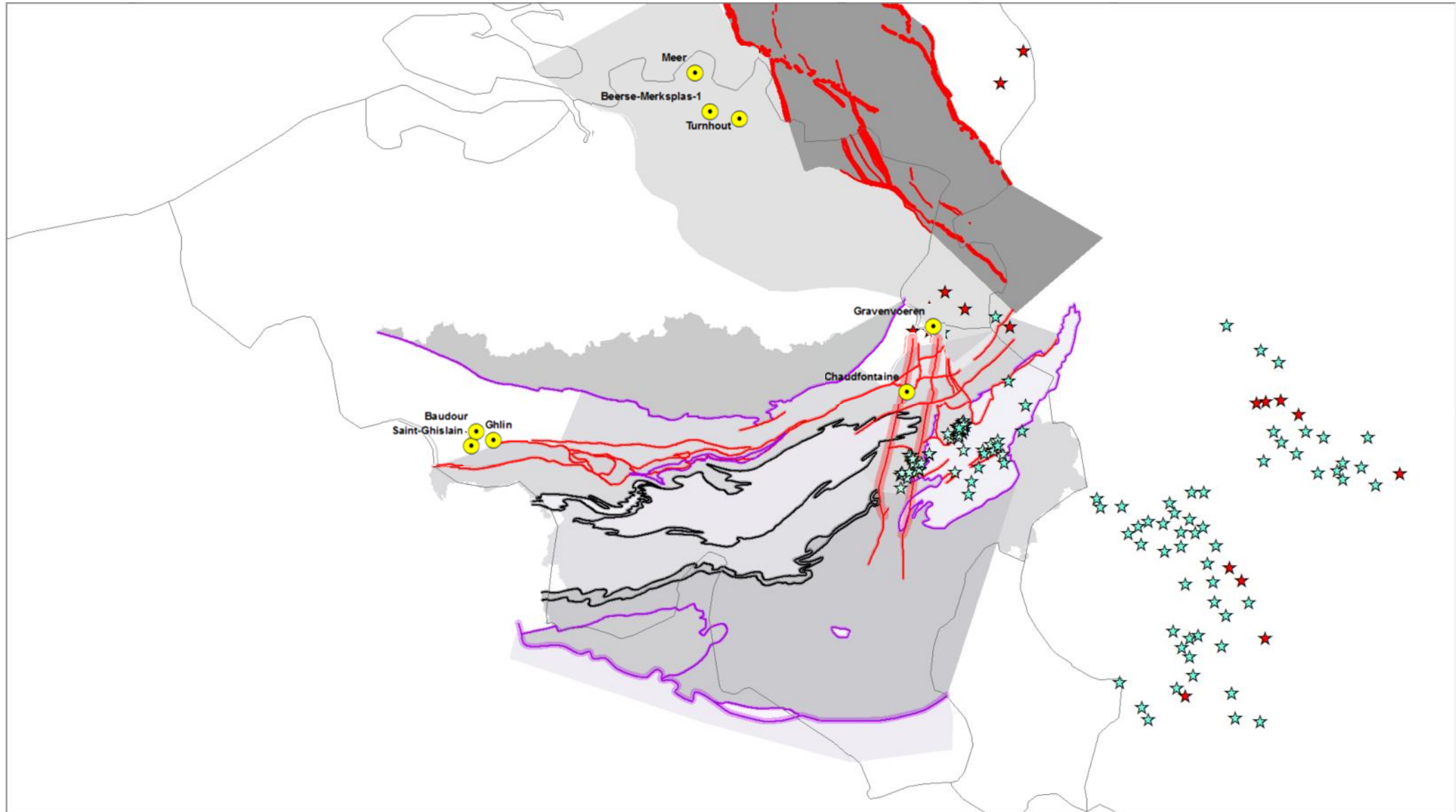
GIVING CONTEXT TO RESULTS



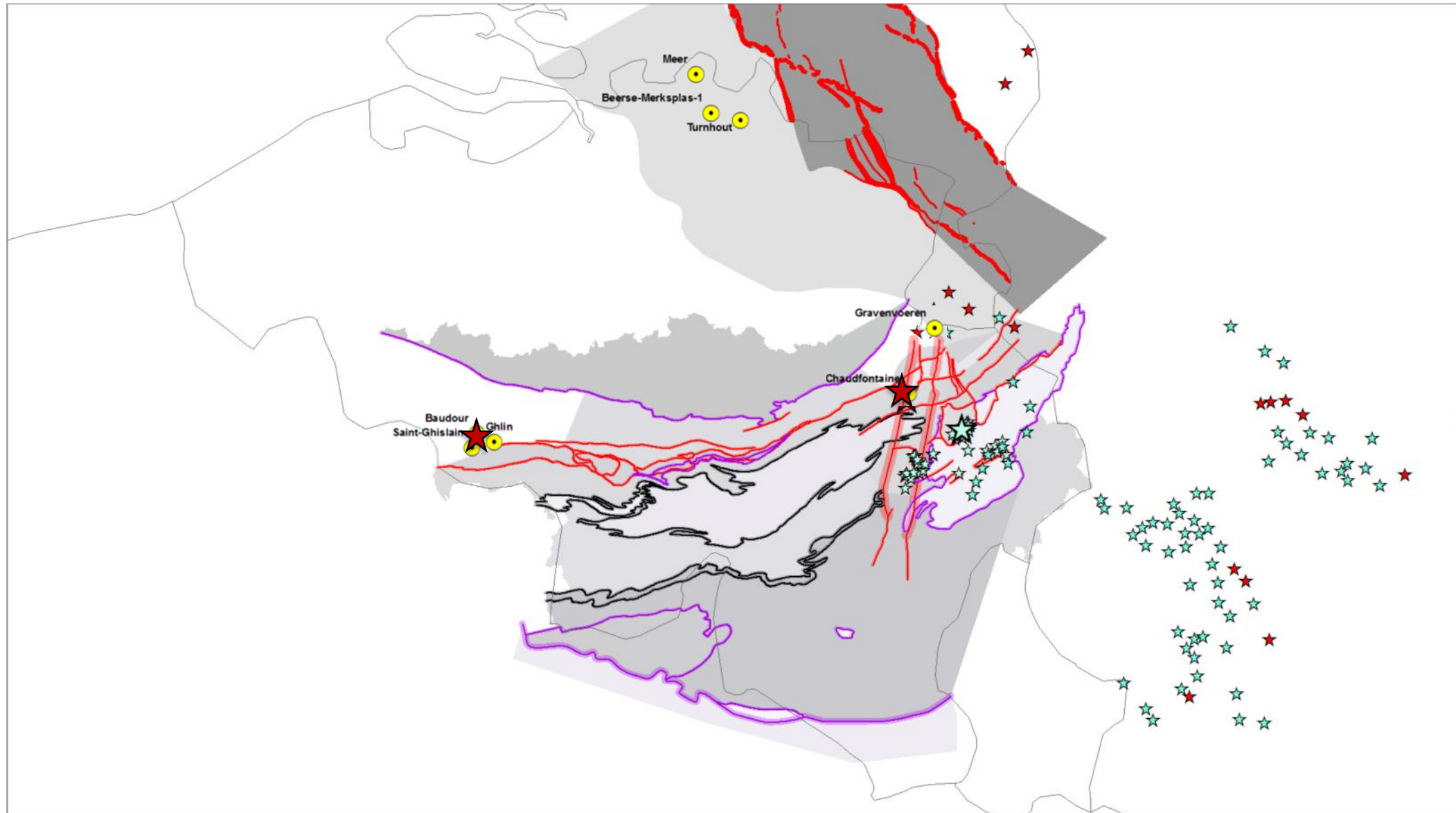
GEOMANIFESTATIONS



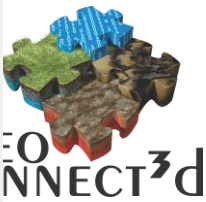
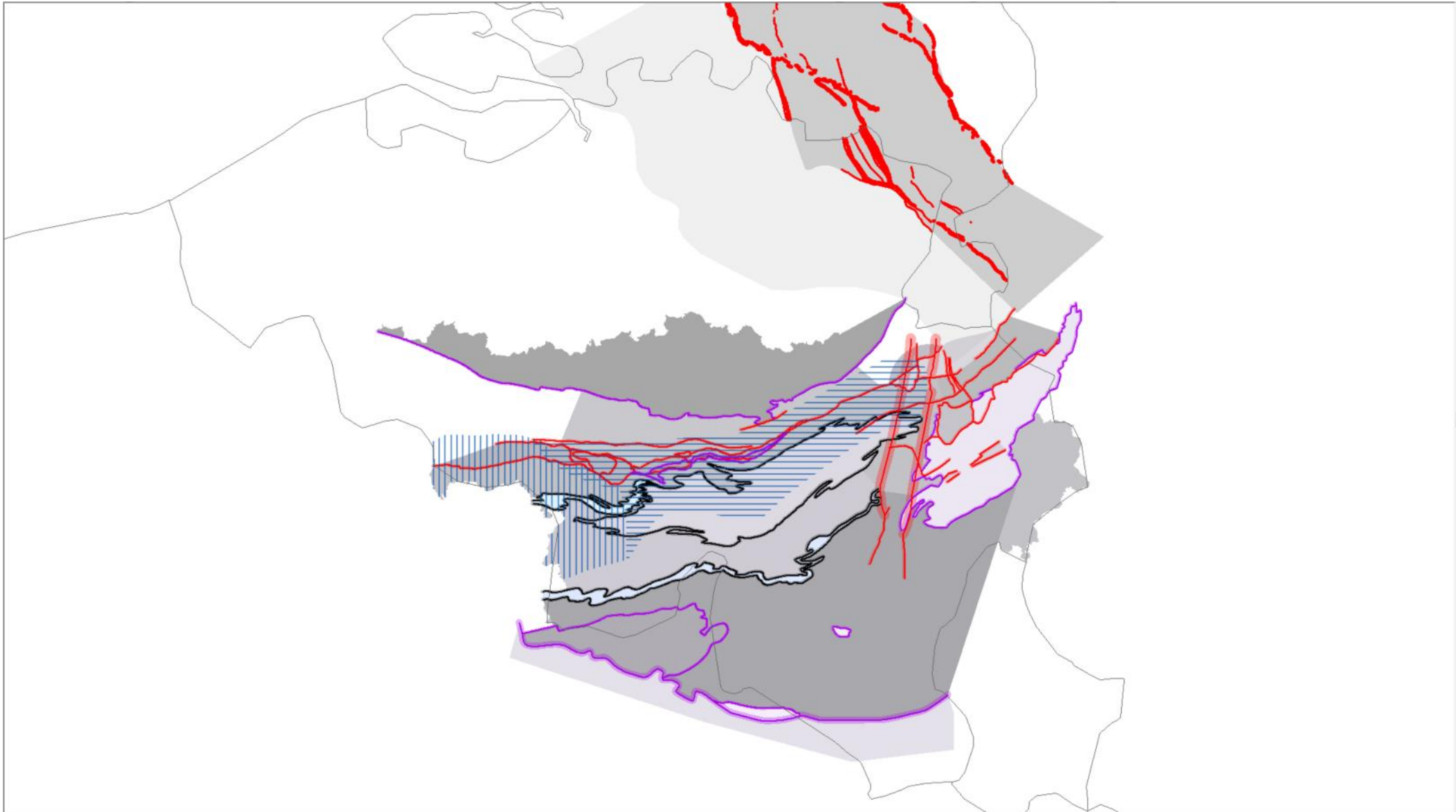
GEOMANIFESTATIONS



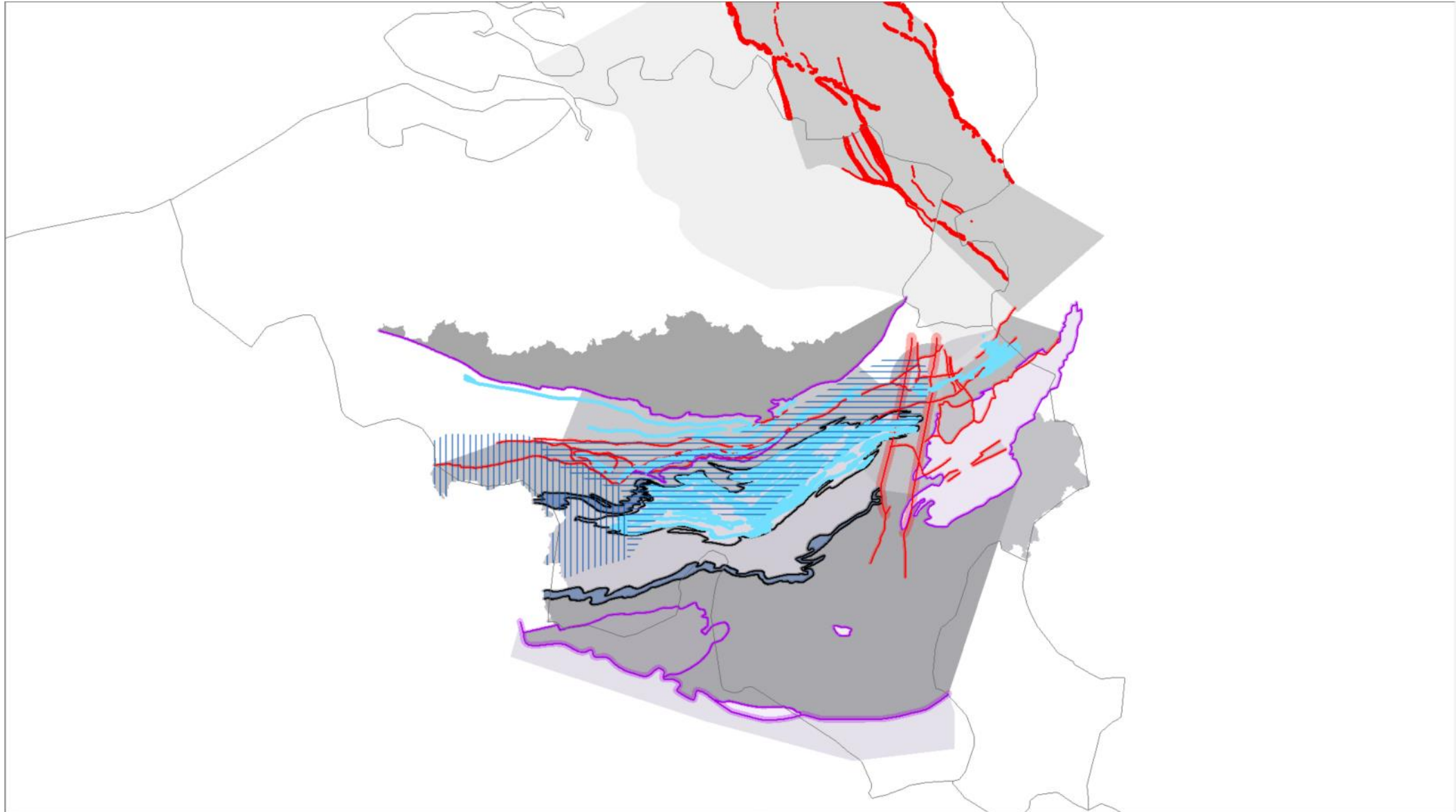
GEOMANIFESTATIONS



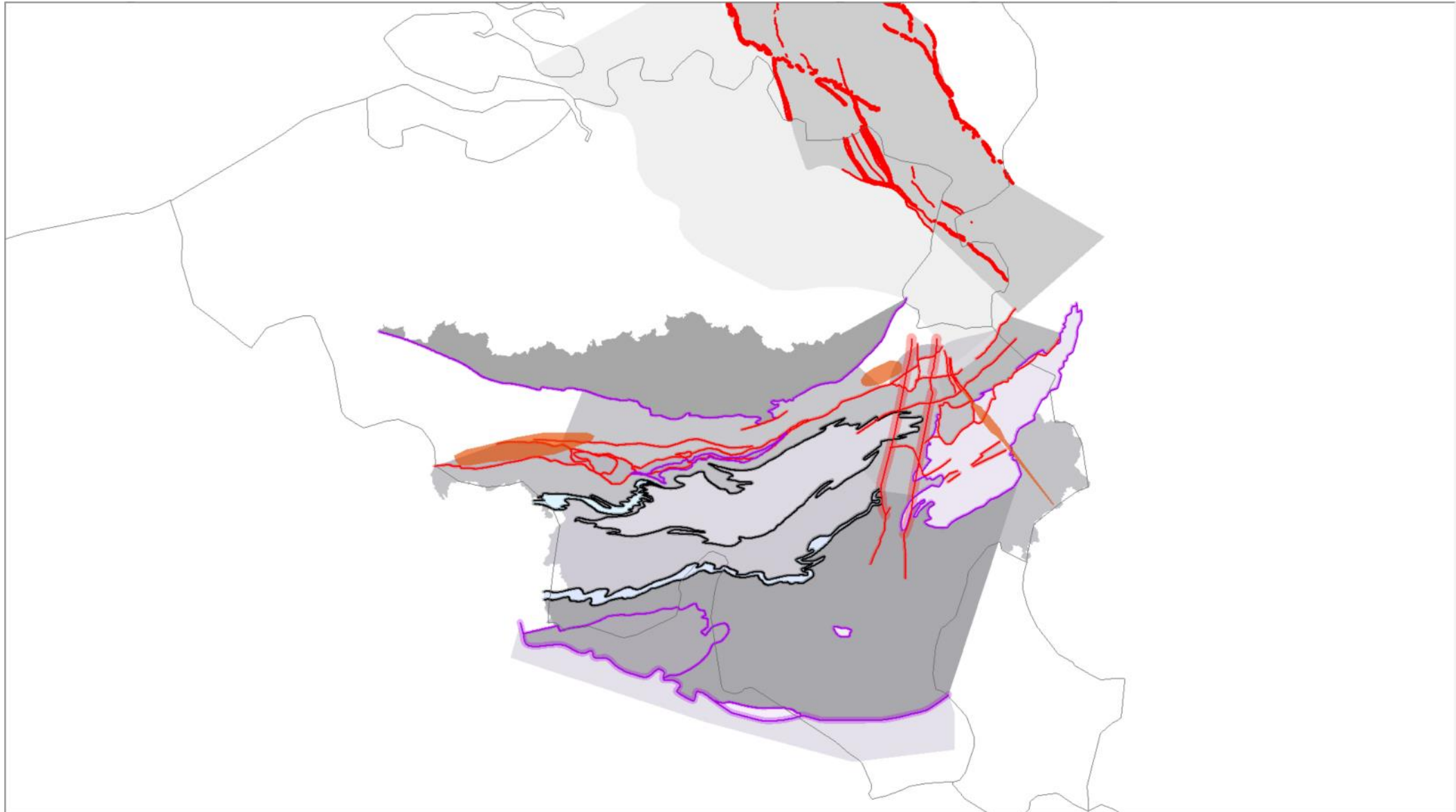
Geology



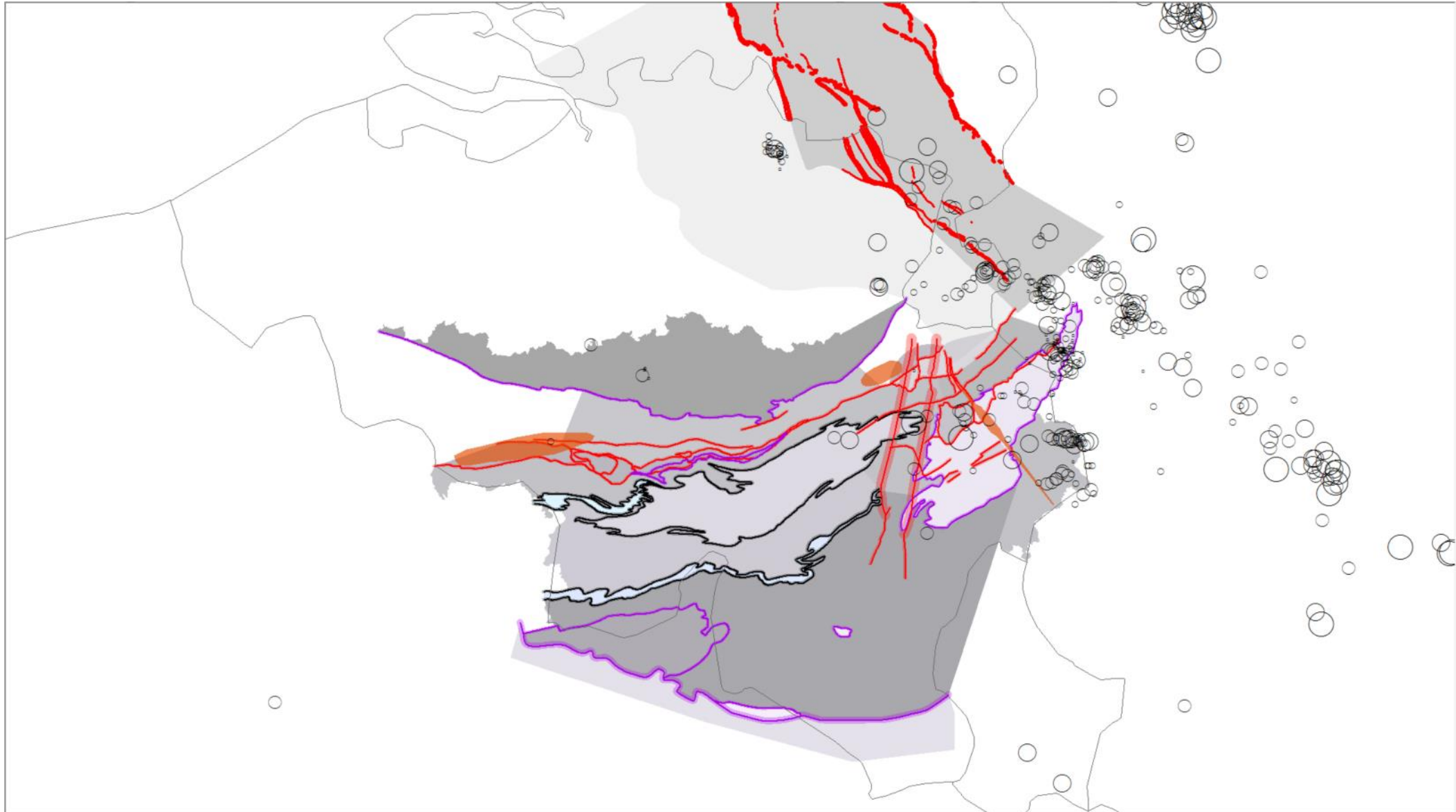
Geology



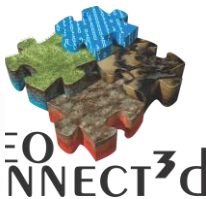
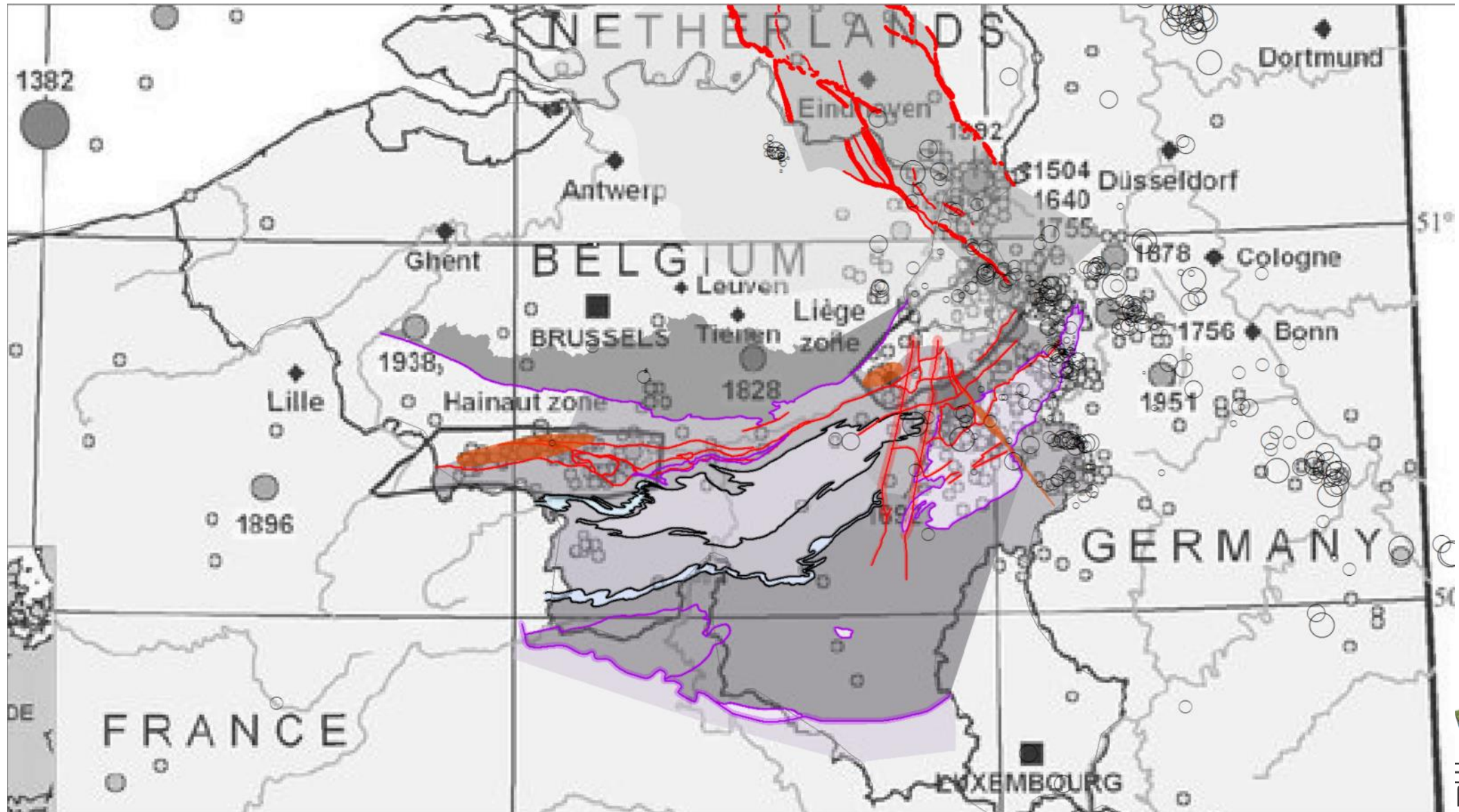
FRACTURED ZONES



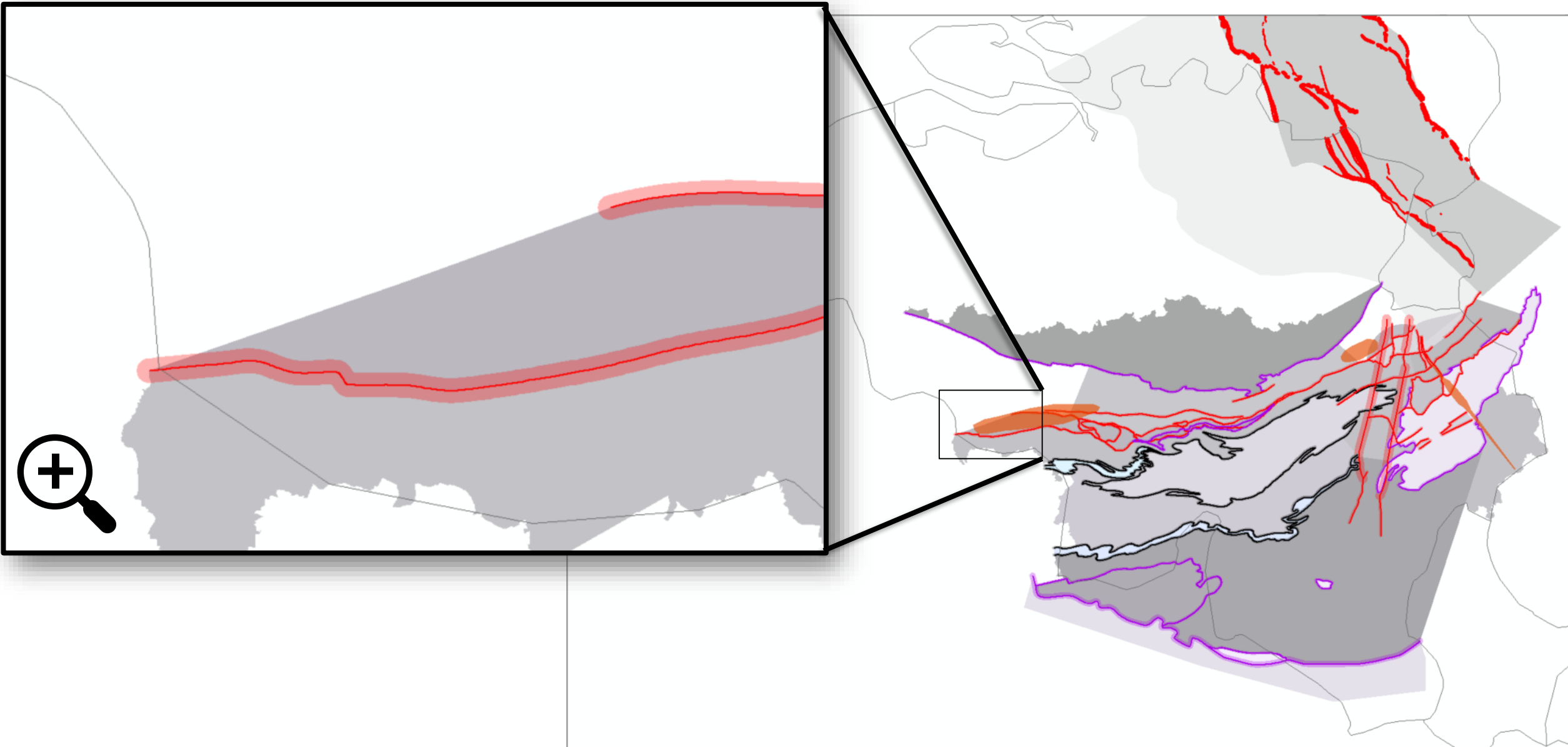
FRACTURED ZONES



FRACTURED ZONES



FRACTURED ZONES



Agility in SERVING Geological Info

On track

- Structural framework:
‘Framing’ results from other studies
- Geomanifestations:
Exploiting the atypical and remarkable
- Faults with embedded uncertainty

Not there yet

- For the deep:
We need 3D visualisation
- Find the right ‘cow-steak’ balance
(raw versus interpreted data)