



UNECE




ENERGY



Best Practices for Sustainable Resource Management

GeoERA Webinar Series
Towards a Geological Service for Europe
9 – 13 November 2020



The background of the image is a majestic mountain landscape. On the left, a sharp, rocky mountain peak rises vertically, its surface textured with vertical fissures and small patches of greenery. The sky above is a soft gradient of orange and yellow, suggesting the time is either dawn or dusk. In the distance, more mountain ranges are visible, shrouded in a light mist or haze. A single, dark evergreen tree stands in the lower right foreground, its silhouette contrasting against the lighter background. The overall mood is serene yet powerful, emphasizing the grandeur of nature.

Climate change is no
longer a doomsday
prophecy, it's a reality.

Astrid Nøklebye Heiberg

Natural Resources Trends



UNECE

Material Footprint tonnes per capita



Low
Income



Lower-Middle
Income



Upper-Middle
Income



High Income

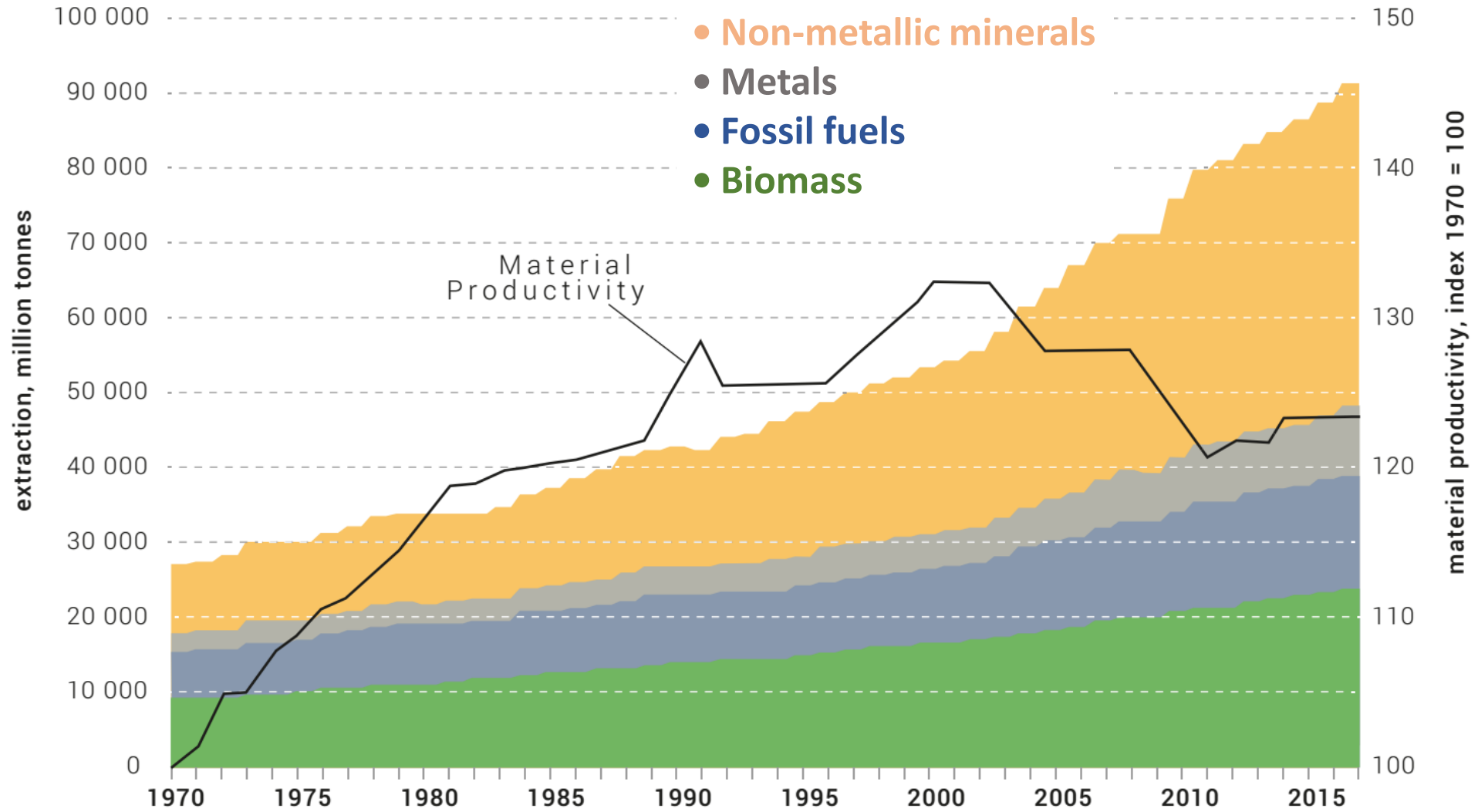
1970
2017

11.9

Natural Resources Trends



UNECE

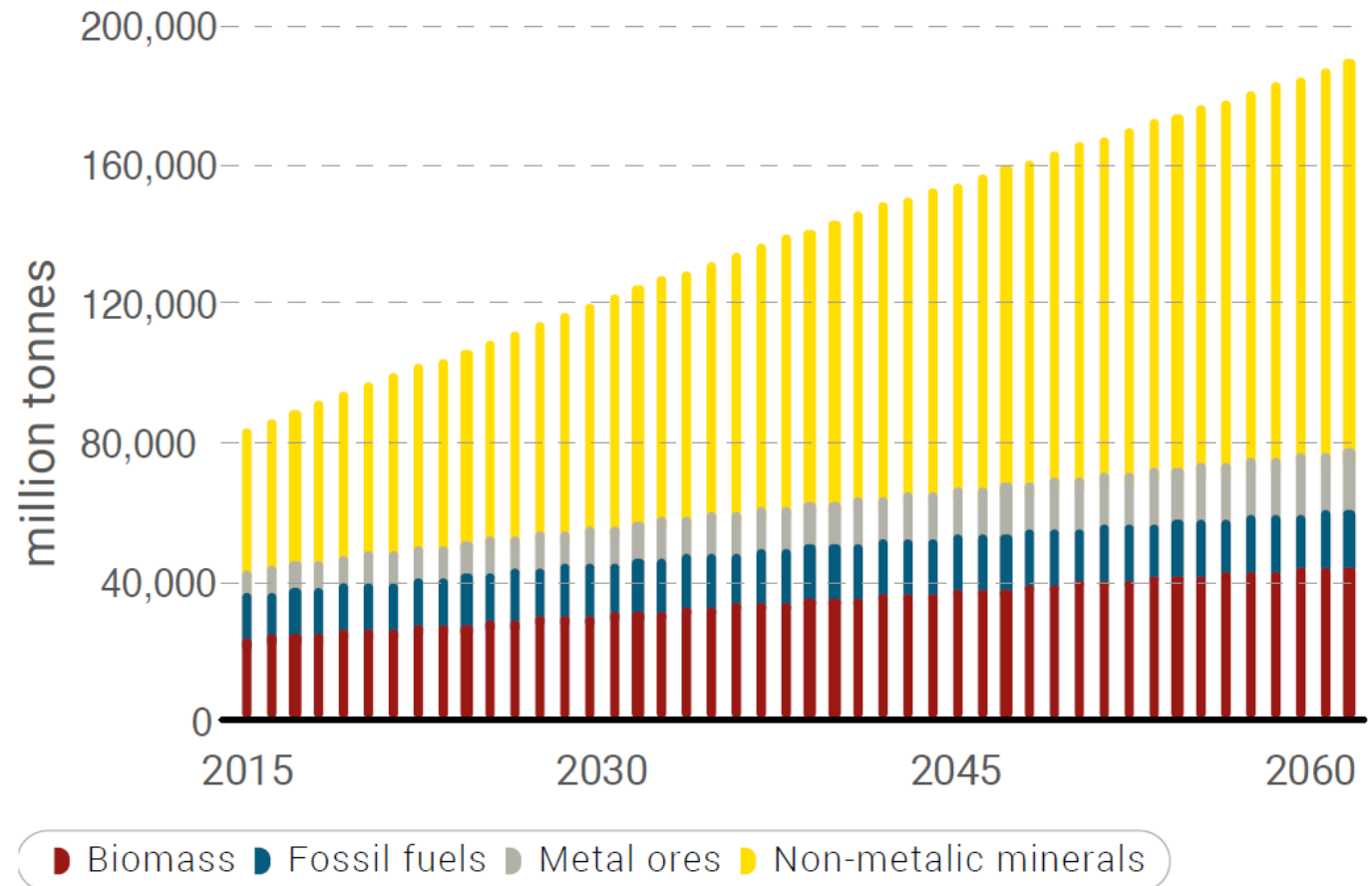


Natural Resources Outlook



UNECE

**By 2060
resource use
is expected to
grow from
11.9 tonnes
to 18.5
tonnes per
capita**





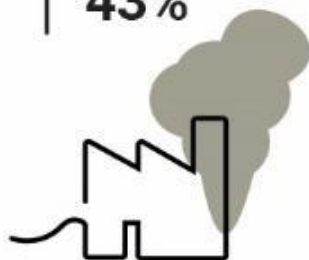
Natural Resources Outlook

↑ more than
doubles



Global material
extraction

↑ increases by
43%



Greenhouse gas
emissions

↑ increases by
more than **20%**



Area of
agricultural land

↑ increases by
25%



Global
pasture land

↓ reduces by
over **10%**



Forests

↓ reduces by
around **20%**



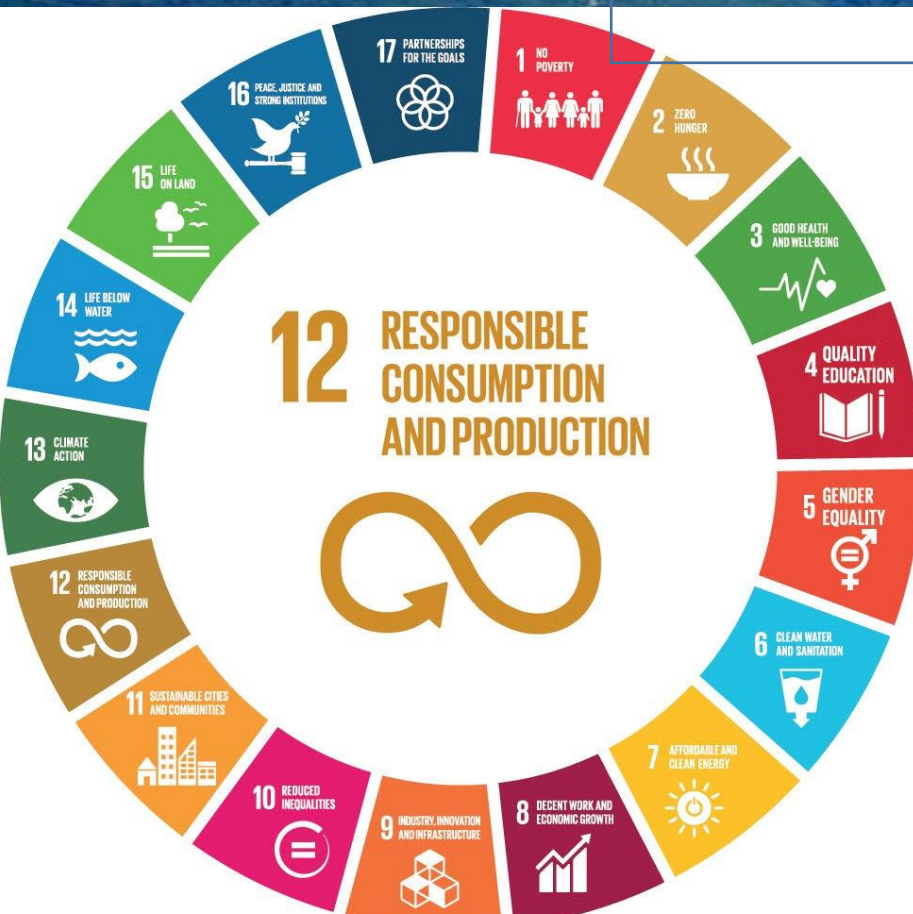
Other
natural habitat

The 2030 Agenda



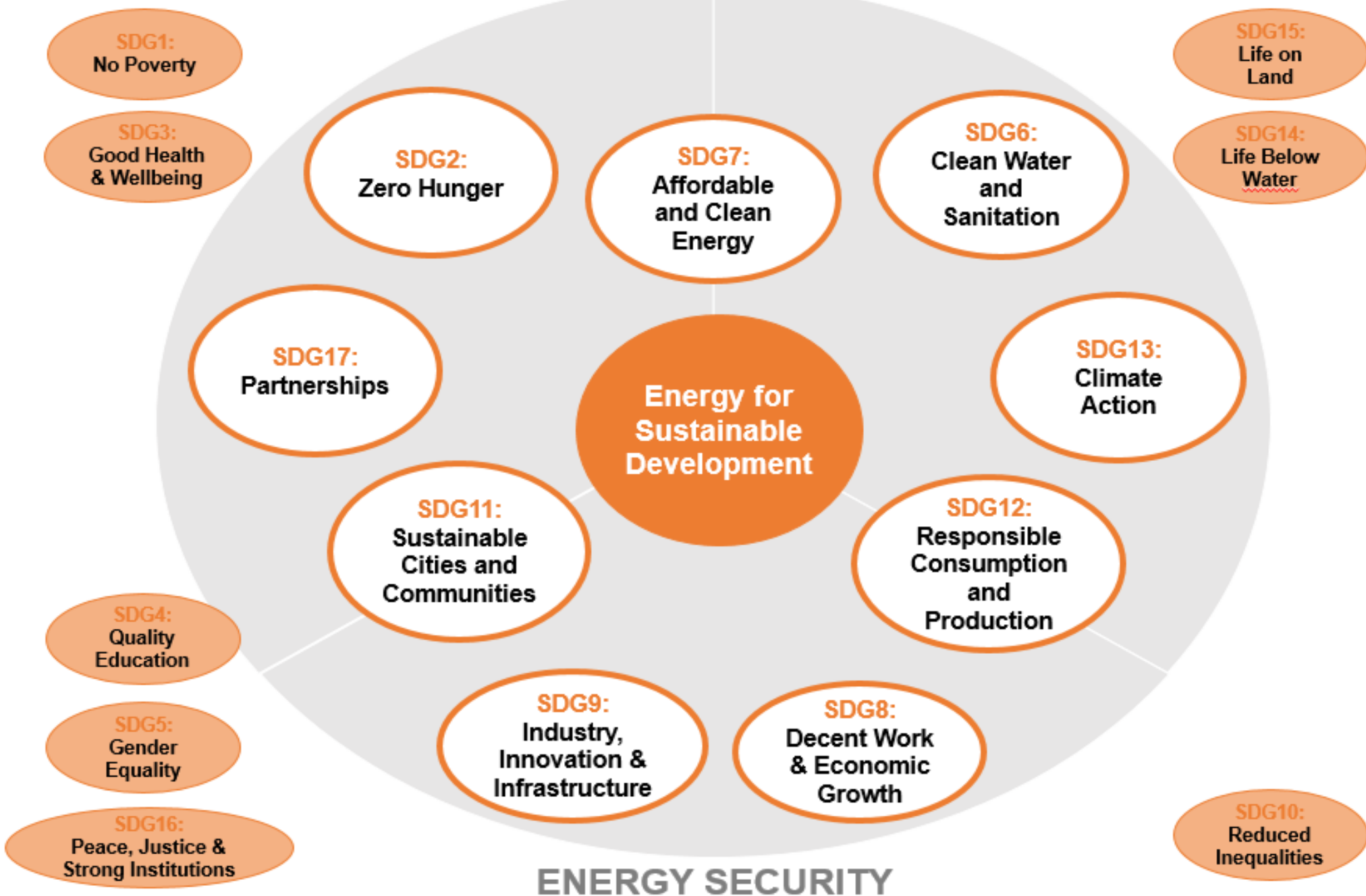
UNEP

By 2030, achieve sustainable management and efficient use of natural resources



ENERGY FOR QUALITY OF LIFE

ENERGY AND ENVIRONMENT

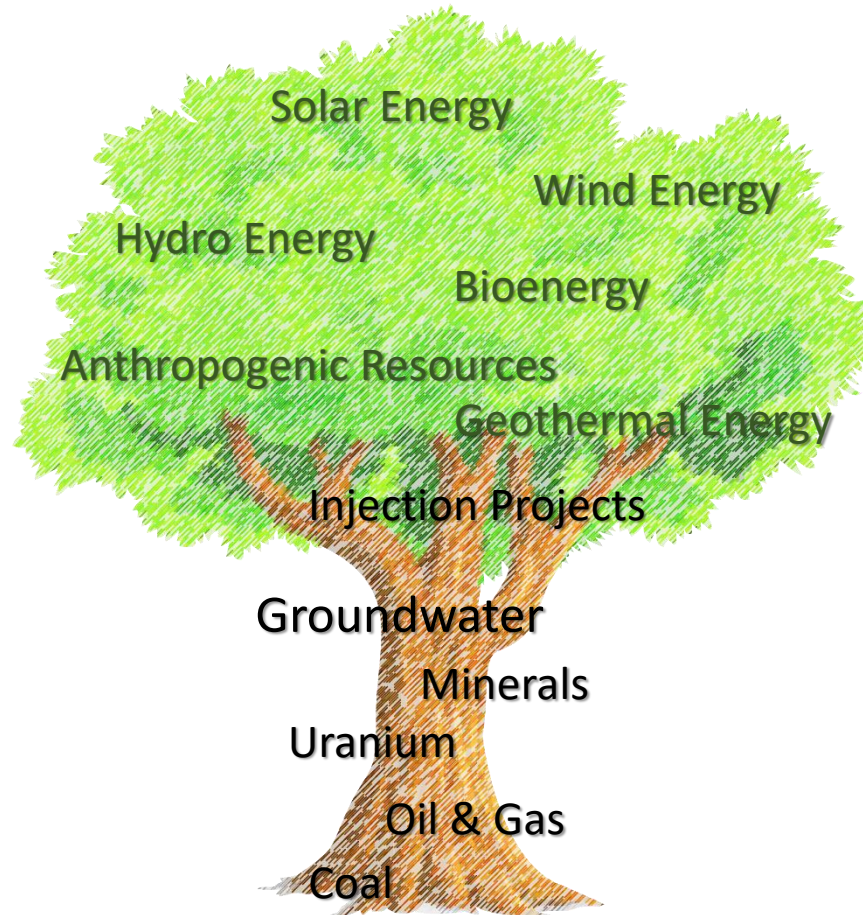


Resources for Sustainable Development

Rewriting the resource management narrative



UNECE



UNFC-based UN Resource Management System (UNRMS) focuses on progression of resource projects, social acceptability and investment readiness



UNECE



ENERGY



Thank you!

Scott FOSTER

Director

UNECE Sustainable Energy Division

+41 22 917 2444

scott.foster@un.org

