



Authors and affiliation:
Eoin McGrath & Tim Workman,
GSI

Deliverable D4.3

E-mail of lead author:
eoin.mcgrath@gsi.ie

Historic tourist mines GIS

Version: 30 October 2021

This report is part of a project that has received funding by the European Union's Horizon 2020 research and innovation programme under grant agreement number 731166.



Deliverable Data		
Deliverable number	D3.4	
Dissemination level	Public	
Deliverable name	Historic tourist mines GIS	
Work package	WP3, Minerals Inventory	
Lead WP/Deliverable beneficiary	GEOZS/GSI	
Deliverable status		
Submitted (Author(s))	30/10/2021	Tim Workman, Eoin McGrath
Verified (WP leader)	30/10/2021	Špela Kumelj
Approved (Coordinator)	30/10/2021	Lisbeth Flindt Jørgensen



GENERAL INTRODUCTION

Europe has a long mining history dating back to the Bronze Age (3300 - 1200 BC). Many former mining sites are now destinations for tourism, generally related to the geology and mining activity of those sites. This task aimed to document the location and details of those sites across Europe and incorporate it into the EGDI data portal.



TABLE OF CONTENTS

1	INTRODUCTION	4
1.1	Task description	4
2	RESULTS.....	5
3	FUTURE WORK	5



1 INTRODUCTION

Europe has a long mining history dating back to the Bronze Age (3300 - 1200 BC). Early mining activity was carried out in a primitive manner and only relatively high grade mineralization was worked. Many developments have taken place since then up to the present day. In addition, the range of commodities mined has greatly expanded over this time period and include ornamental stone, industrial minerals, fuel minerals as well as metal mines. Several of these sites have had over 1,000 years of continuous mining activity while others measure their life in decades or less. The mining activity has altered the landscape and many mining regions have a unique environment and built heritage.

This Task has documented those mining areas which have developed tourist attractions or amenities following the closure of the mines both in partner countries and in additional European countries not partners within this Task or WP. Sites that have any portion of tourist infrastructure in place have been documented and recorded

1.1 Task description

A template for data collection was designed which was then populated by the partner organisations within this task. Several non-partner countries also volunteered their time and resources to submit data while GSI researched and populated the templates on behalf of the remaining countries. The data included:

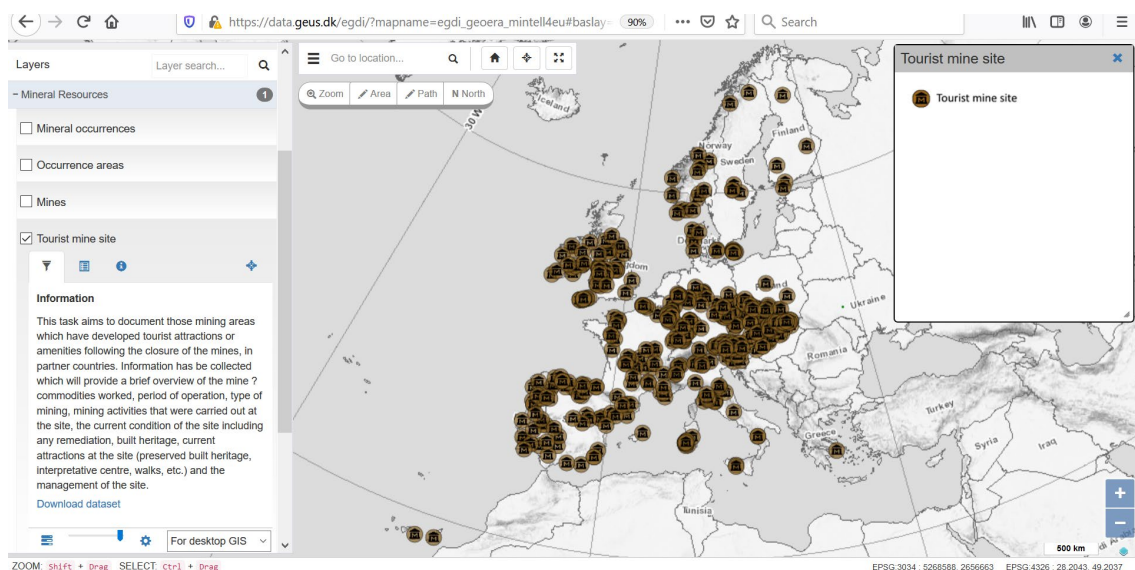
- A brief overview of the mine – commodities worked, period of operation, type of mining, mining activities that were carried out at the site (extraction, processing, smelting, products, etc.).
- A brief description and list of built heritage and any remains at the site.
- A list of current attractions at the site (preserved built heritage, interpretative centre, walks, etc.)
- Location of each site, photograph of site and link to tourist website if applicable



2 RESULTS

In the region of 500 sites across Europe were documented with tourist status ranging from minor signage to UNESCO Global Geopark and UNESCO World Heritage Sites. Mining from prehistory through modern times is recorded and documented and this deliverable will also assist local and national tourist agencies to highlight the mining and industrial heritage of their respective regions.

[A map displaying the sites](#) has been created at [EGDI](#) (European Geological Data Infrastructure), see Fig. 1 below.



Besides, a “story map” (see some screen dumps at the next pages) has been developed that can incorporate text summaries of each site along with representative photos from each former mine. The link to this story map will be available at the EGD I map when ready.

3 FUTURE WORK

The EGD I infrastructure is a valuable data management system and is ideally placed for professionals and policy makers to access the European wide datasets to inform decision making and future research. The usability for general members of the public may be less obvious and to this end GSI have also developed a more generally accessible version of this dataset. This ‘story map’ will be developed to a more easily usable tool and integrated into tourist strategies within the respective countries and regions.

Additionally, a hard copy book is in preparation to be published following the completion of the project.



Mintel4EU Touristic Mine Sites

Europe has a rich and important mining history both culturally and economically. Over 900 sites, ranging from minor sites to UNESCO Global Geoparks and UNESCO World Heritage Sites have been preserved and are open for the public to visit.

CZ DE DK ES FR GR IE IT NO PO PT SI HU AT GR LU SK SE

Mansted Kalkegruber

Local Information: The main activity at Mansted Kalkegrube was the production of lime. The site was active from 1850 to 1950. The mine was mostly used for the production of lime. The limestone was used for the production of lime. The limestone was used for the production of lime.

LIST OF TOURISTIC MINE SITES

Location: Mansted
Address: Mansted
Postcode: 26381
Phone: +49 44 230 100
Website: [www.mintel4eu.com](#)

Mintel4EU Touristic Mine Sites

Europe has a rich and important mining history both culturally and economically. Over 900 sites, ranging from minor sites to UNESCO Global Geoparks and UNESCO World Heritage Sites have been preserved and are open for the public to visit.

CZ DE DK ES FR GR IE IT NO PO PT SI HU AT GR LU SK SE

Mintel4EU Touristic Mine Sites

Europe has a rich and important mining history both culturally and economically. Over 900 sites, ranging from minor sites to UNESCO Global Geoparks and UNESCO World Heritage Sites have been preserved and are open for the public to visit.

CZ DE DK ES FR GR IE IT NO PO PT SI HU AT GR LU SK SE

Argine

Local Information: The main activity at Argine was the production of lime. The mine was active from 1850 to 1950. The main activity at Argine was the production of lime. The mine was active from 1850 to 1950. The main activity at Argine was the production of lime. The mine was active from 1850 to 1950. The main activity at Argine was the production of lime.

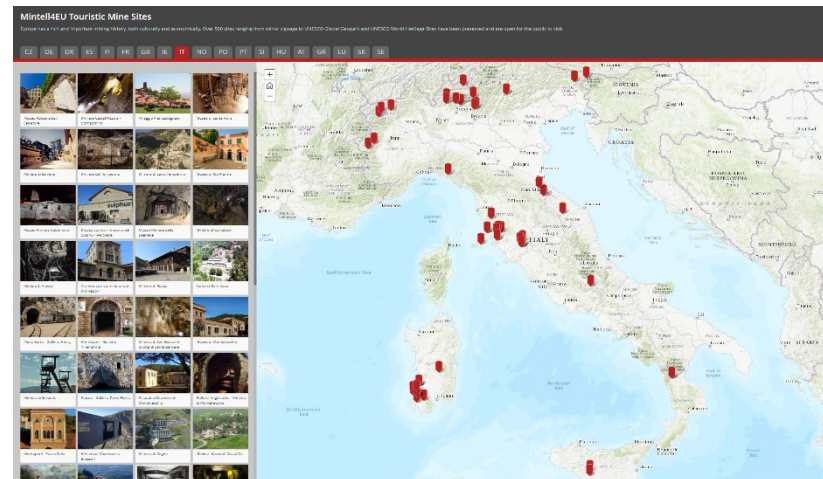
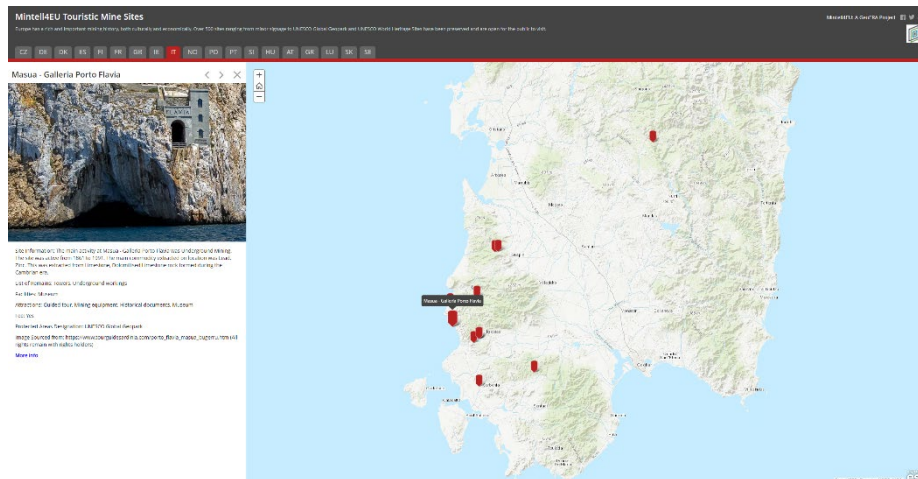
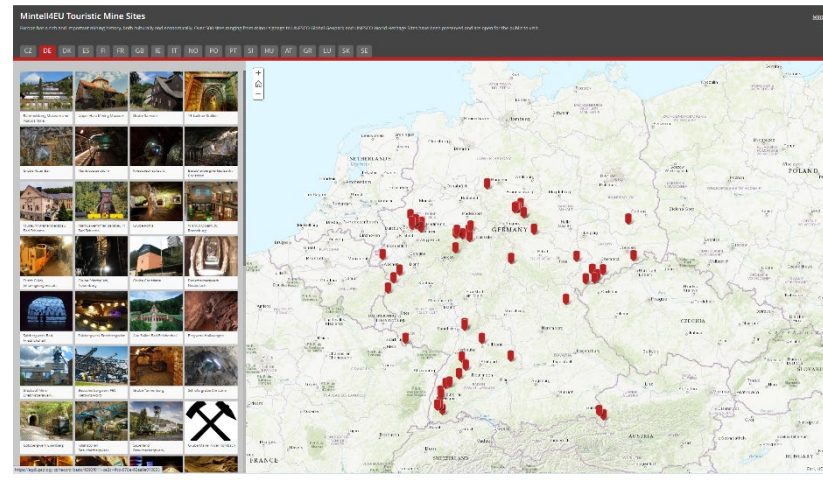
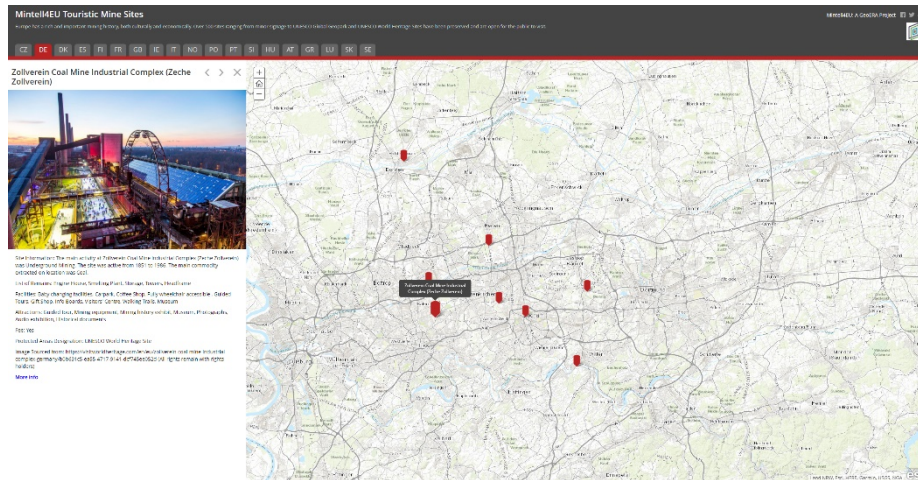
LIST OF TOURISTIC MINE SITES

Location: Argine
Address: Argine
Postcode: 26381
Phone: +49 44 230 100
Website: [www.mintel4eu.com](#)

Mintel4EU Touristic Mine Sites

Europe has a rich and important mining history both culturally and economically. Over 900 sites, ranging from minor sites to UNESCO Global Geoparks and UNESCO World Heritage Sites have been preserved and are open for the public to visit.

CZ DE DK ES FR GR IE IT NO PO PT SI HU AT GR LU SK SE



ABOVE: Screen dumps from the story map from Denmark, Ireland, Germany and Italy.