

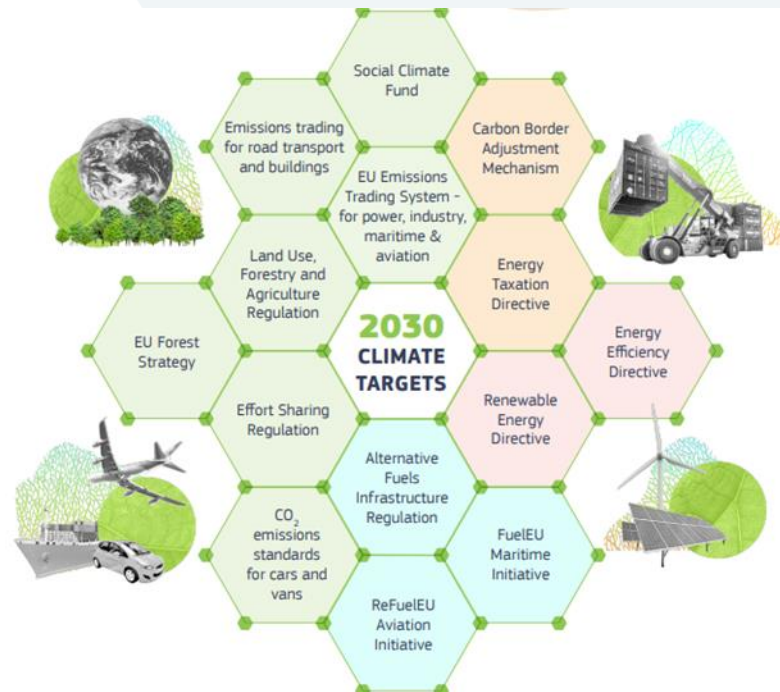
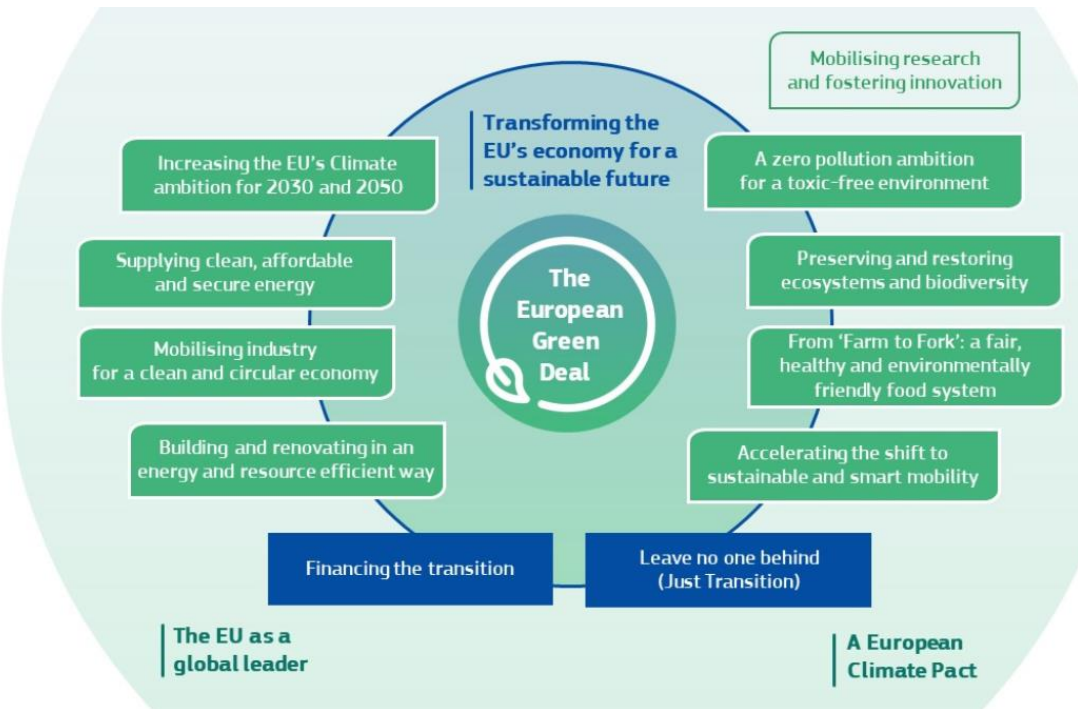


Geological Service for Europe as a foundation to the Green Deal

Raw materials as enabler of the Green Deal



Green Deal architecture

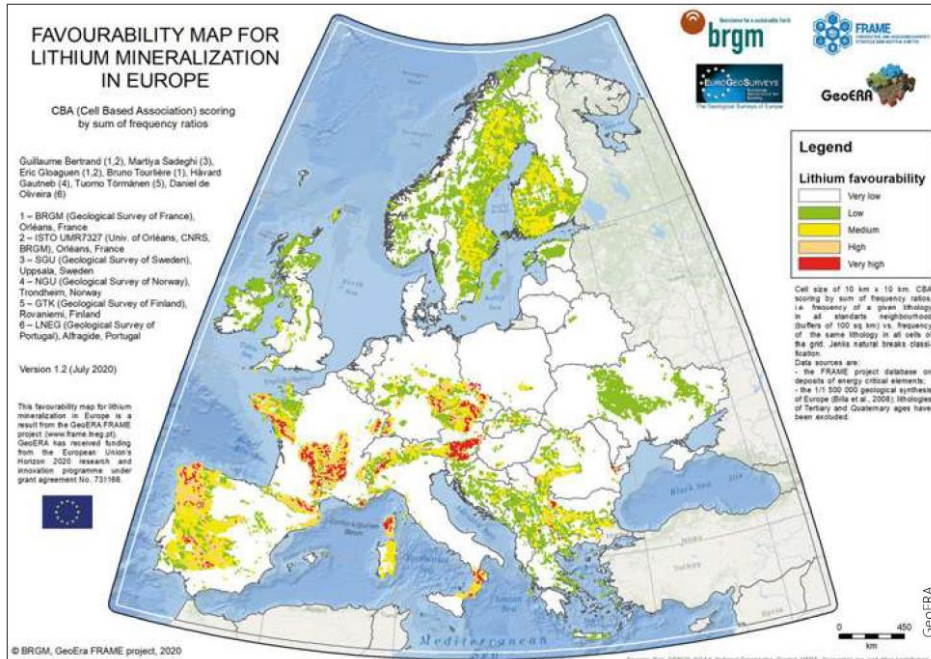


Geological Service for Europe

Key contribution:

**Overcoming EU metals
strategic dependencies as a
key solution for EU's
Green Deal success**

Consistently continue the inventory of European deposits



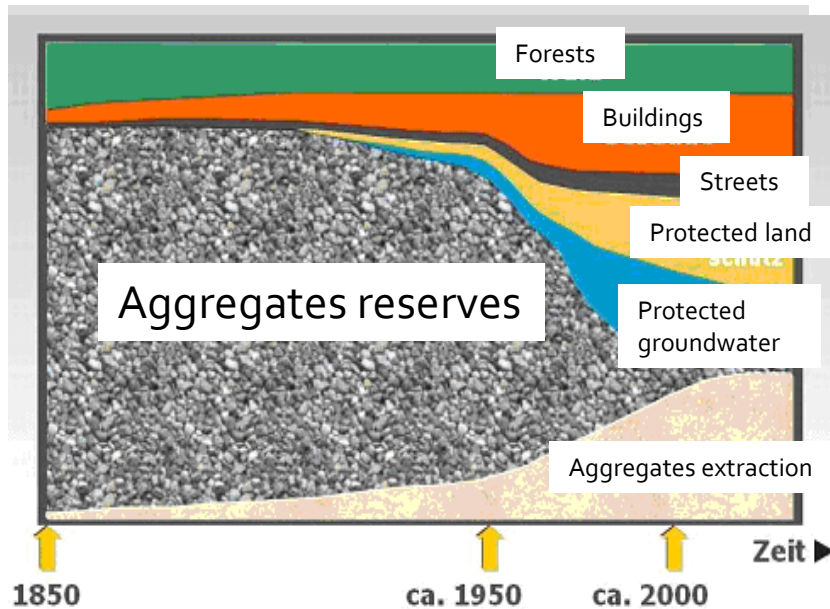
- deep, fast, cheap and smart
- define European priority exploration projects and concentrate with joint forces on these
- enhance the availability of the data for entrepreneurial activities
- Take note of the global competitors in the race for raw materials when it comes to data availability

Continue and expand basic and applied research in econ. geology



- advancements in metallogenic models
- Improvements of exploration methods
- Improvements of evaluations and interpretation models (e.g. Artif. Intel.)
- Joint forces, join European networks (e.g. ERMA)

Strengthen the role of geol. services in spatial planning processes



- Safeguard the long term access to the mineral deposits
- 3-dimensional spatial planning

Thank you for your attention!

Robert Holnsteiner
Federal Ministry for Agriculture, Regions and Tourism
Gen. Directorate IV – Telecommunication, Postal Services and Mining
Directorate IV/5 – Minerals Policy
robert.holnsteiner@bmlrt.gv.at