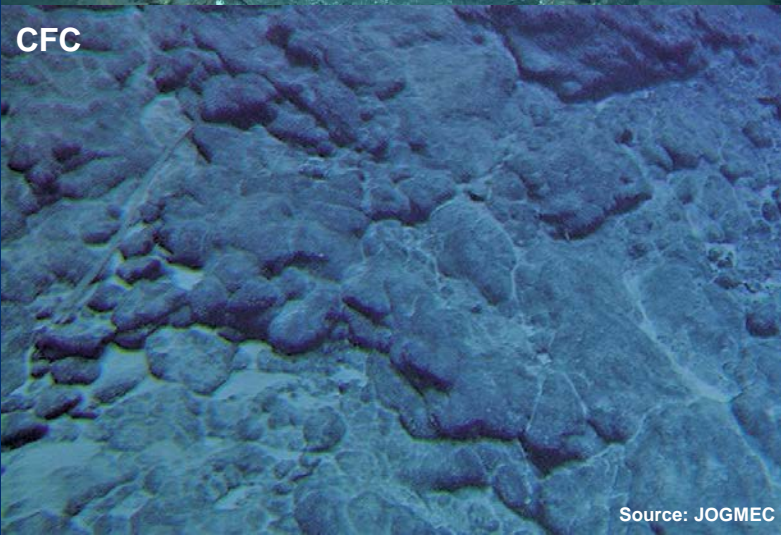
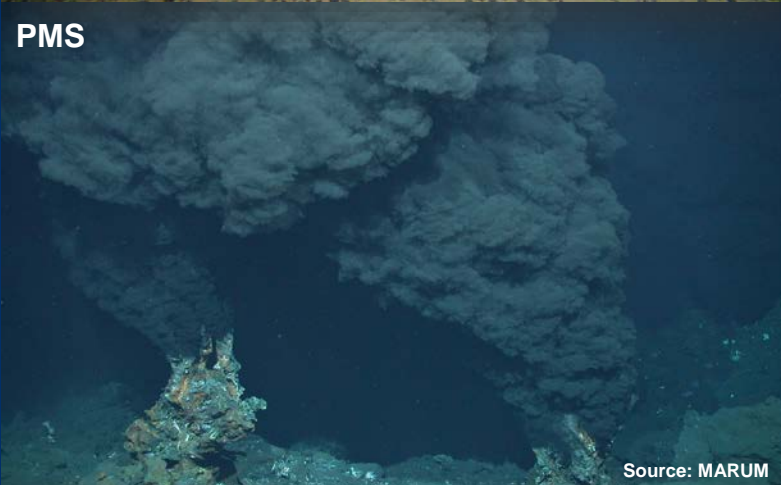




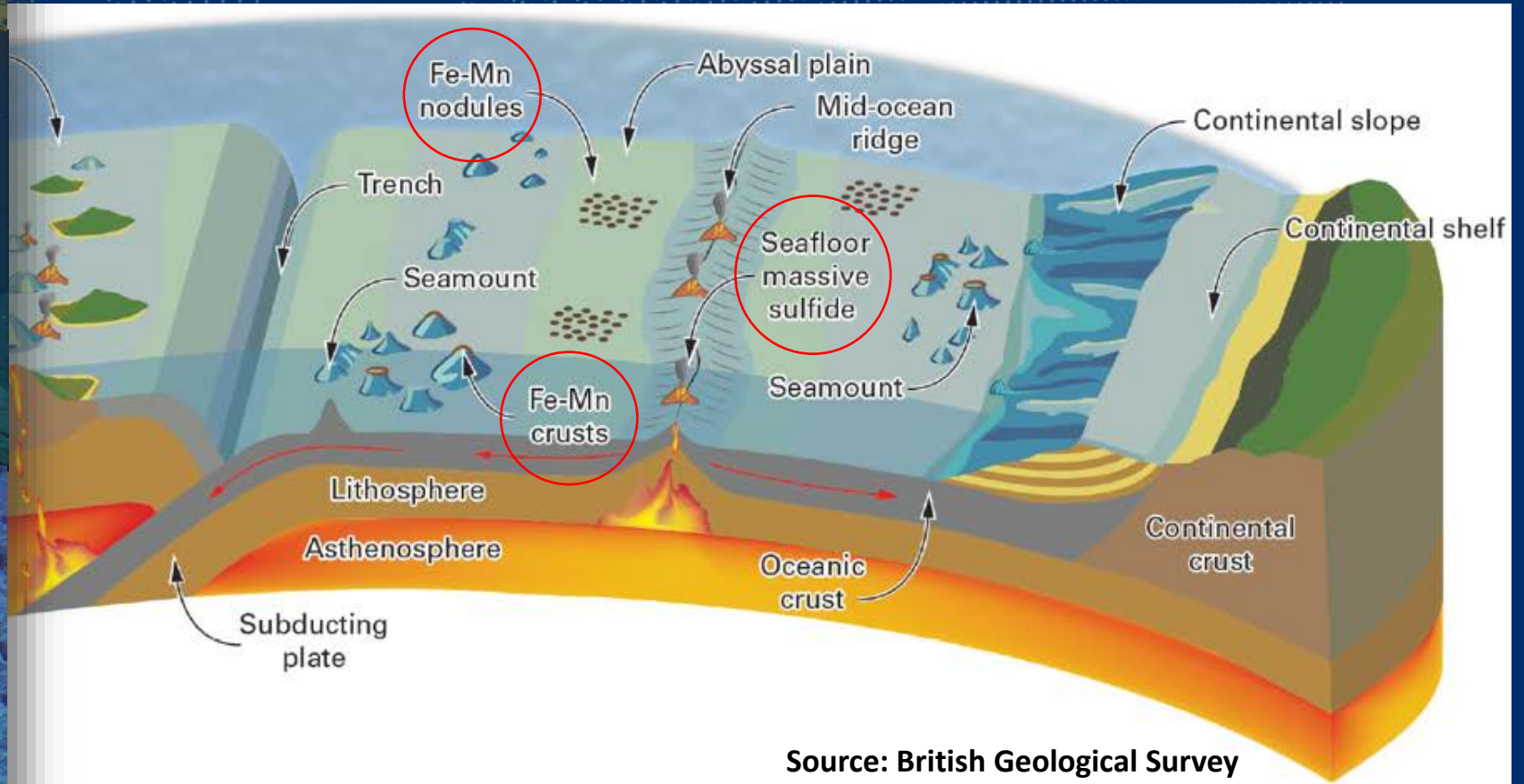
# **GEOLOGICAL INFORMATION FROM A USER PERSPECTIVE**

**MINDeSEA – A Significant Contribution To The Inventory Of  
Global Seabed, Environmental and Marine Mineral Resource Data**

January 20, 2022

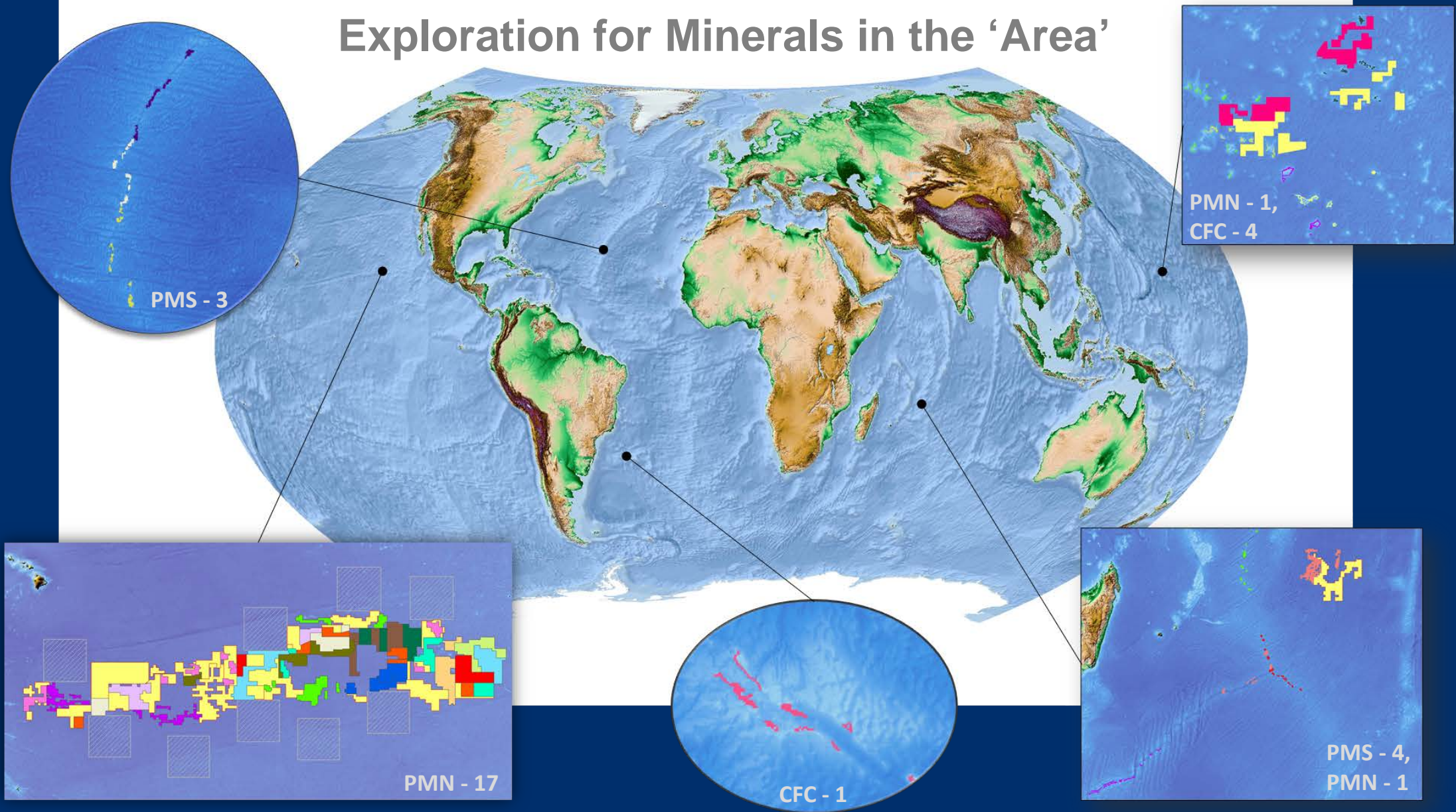


- ❑ International seabed resources in the area outside national jurisdiction ('Area')
- ❑ 371 Mio sq. km of global seabed, 54% representing the 'Area'
- ❑ Global tectonic environments and associated seabed mineral occurrences – PMN, PMS, CFC





# Exploration for Minerals in the 'Area'



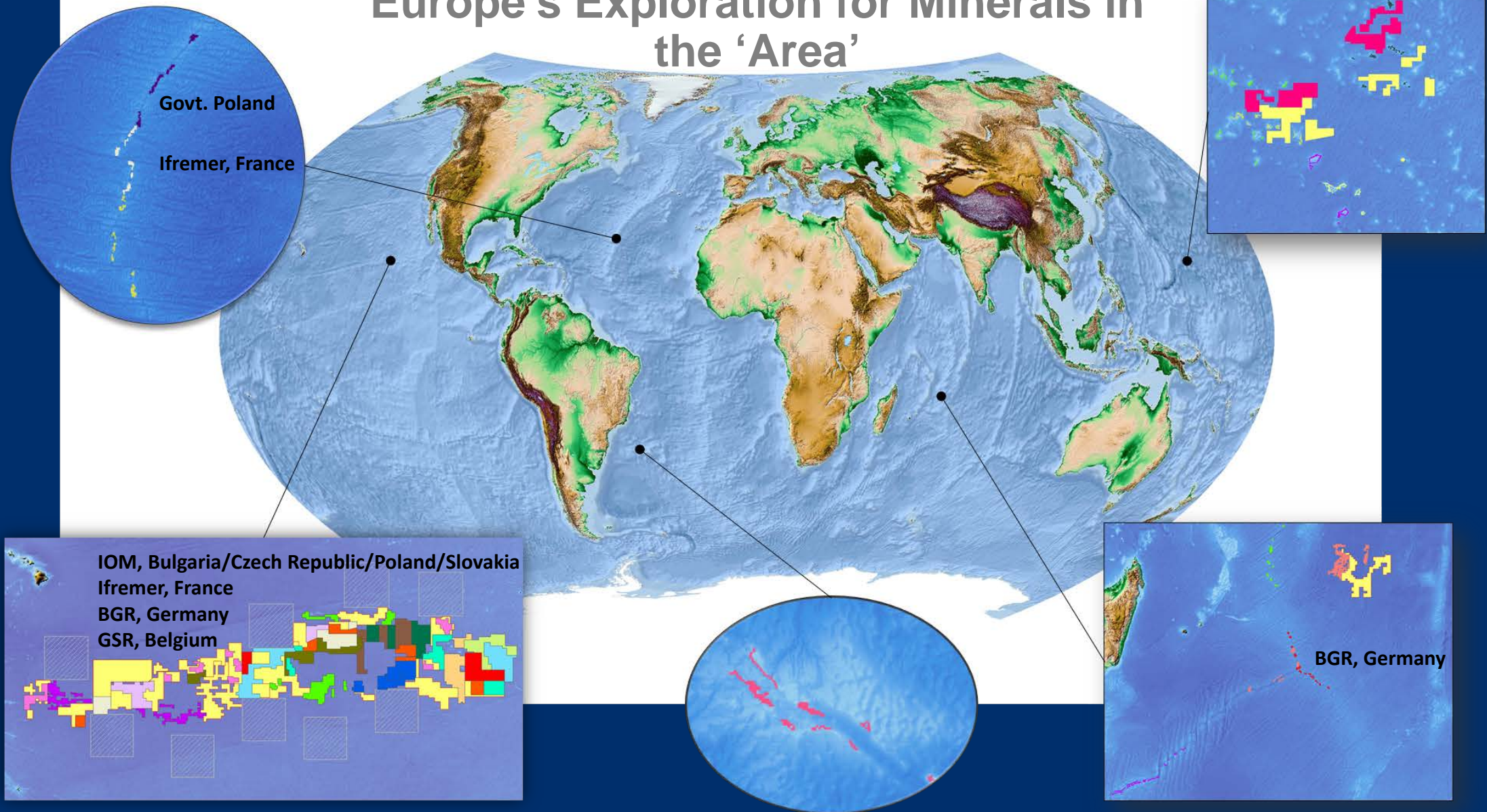
2022 22 contractors, 31 contracts @ 19 PMN, 7 PMS, 5 CFC; 1 appl. PMN



International Seabed Authority



# Europe's Exploration for Minerals in the 'Area'



□ Exploration contracts: Belgium, Bulgaria, Czech Republic, France, Germany, Poland, Slovakia (UK).



International Seabed Authority

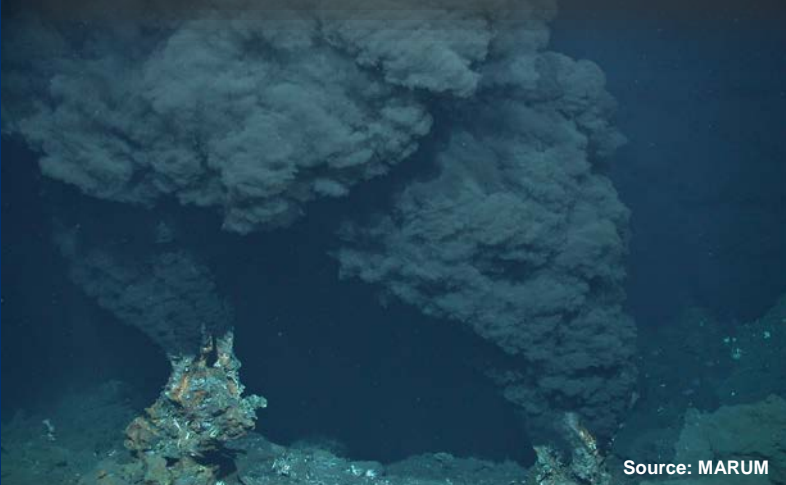


# Europe's Exploration for Marine Minerals

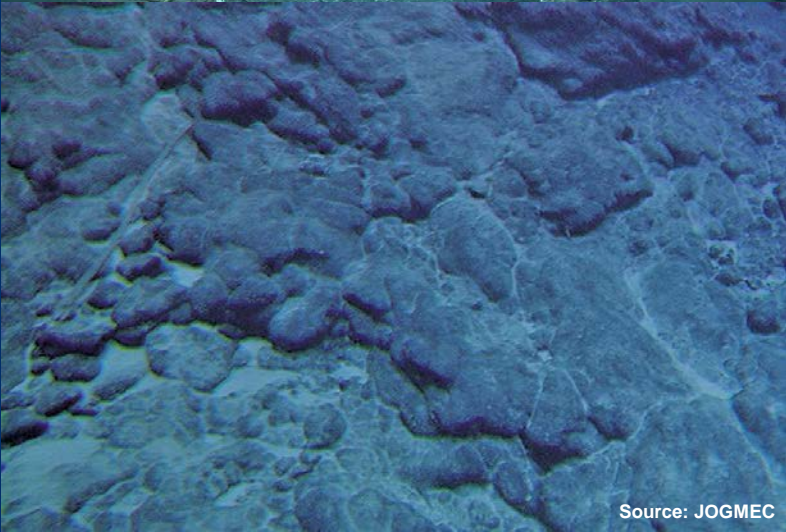
- ❑ Exploration contracts with the International Seabed Authority: Belgium, Bulgaria, Czech Republic, France, Germany, Poland, Slovakia.
- ❑ Two additional contracts by UKSR.
- ❑ 7/31 exploration contracts from EU member states (23%).
- ❑ Norwegian initiative for seabed exploration and mining in own national jurisdiction.
- ❑ Potential for PMS, CFC in national waters of Portugal, France, Italy, Greece, Spain, Iceland.
- ❑ Prospecting and research activities by European countries add to the understanding and global inventory of marine environment and resources.



GEOMAR



Source: MARUM



Source: JOGMEC



# Geological Information – User Perspectives - European Adjustments

- ❑ Seabed Mineral Deposits in European Seas: Metallogeny and Geological Potential for Strategic and Critical Raw Materials (MINDeSEA).
- ❑ MINDeSEA contributes to the *data compilation and inventory of worldwide marine mineral resources and global marine geological and environmental data*.
- ❑ Geological information feed the understanding on *mineral characteristics, regional distribution, mineral resource base, and assessments*.
- ❑ *Triggers marine scientific research and opens opportunities* for exploration activities in national and regional waters (e.g., Norway).
- ❑ Environmental surveys including biodiversity inventories strongly *support protection of specific habitats* for potential *sustainable production*.
- ❑ Resource evaluation *fosters* EU's and EU member countries' *engagement and contribution* to the ISA data base and regulations.
- ❑ Supports joint activities and discussions to *establish regulations* and related *binding standards and guidelines* for resource assessments, strong environmental regulations and potential future exploitation in the 'Area' and in marine European jurisdiction.
- ❑ Fosters joint bilateral and multinational *capacity building programs and enforcement of regulations*.



# Thank You!



## International Seabed Authority

14 - 20 Port Royal Street Kingston, Jamaica

Phone: +1 (876) 922-9105

Fax: +1 (876) 922-0195

**isa.org.jm**



International Seabed Authority